

Windrower Parts Book

Model # WR-1F

Parts Book

Serial # WR-114 to Present



Manufactured by:

LEWIS BROTHERS MANUFACTURING, INC.

Post Office Box 146

Baxley GA. 31513

Phone (912) 367-4651

Fax: (912) 367-3958

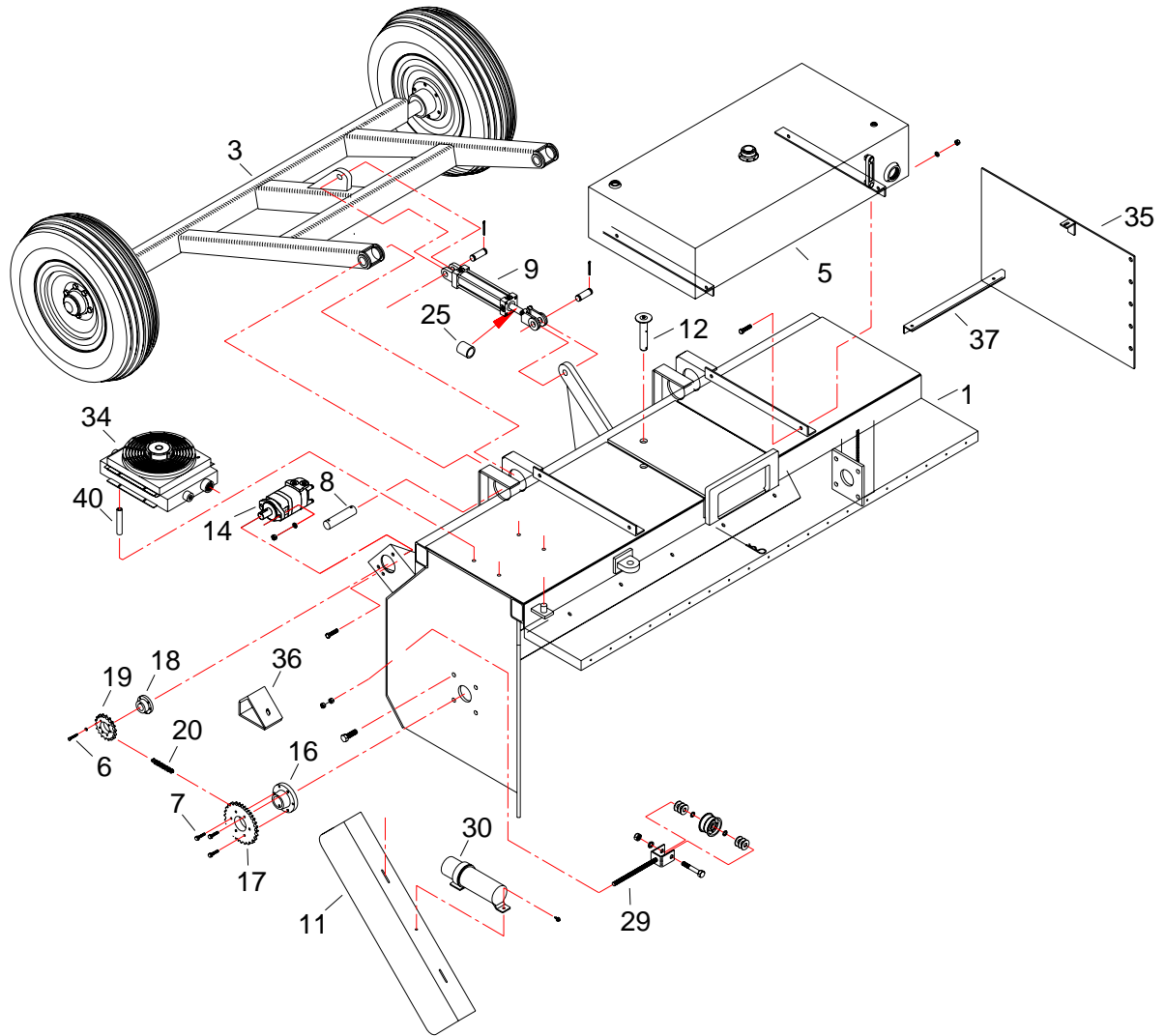
WR-10000-3

Table of Contents

WR-1F Parts After Serial # 113	3-5
Axle	6
Oil Tank	7
Tongue	8
Cylinder	9
Front and Rear Hydraulic Cylinder	10-11
Side Shift Hydraulic Cylinder	12
Drive Chain Adjustment Assembly	13-14
Hydraulic motor	15-16
Hydraulic Kit	17-18
Hydraulic Pump	19-21
Valve Bracket	22-23
Eaton Electric Control Valve	24-28
Rexroth Electric Control Valve	29-32
New Eaton Electric Control Valve	33-37
Decals	38-43

WR-1F PARTS

After Serial # 113



WR-1F PARTS

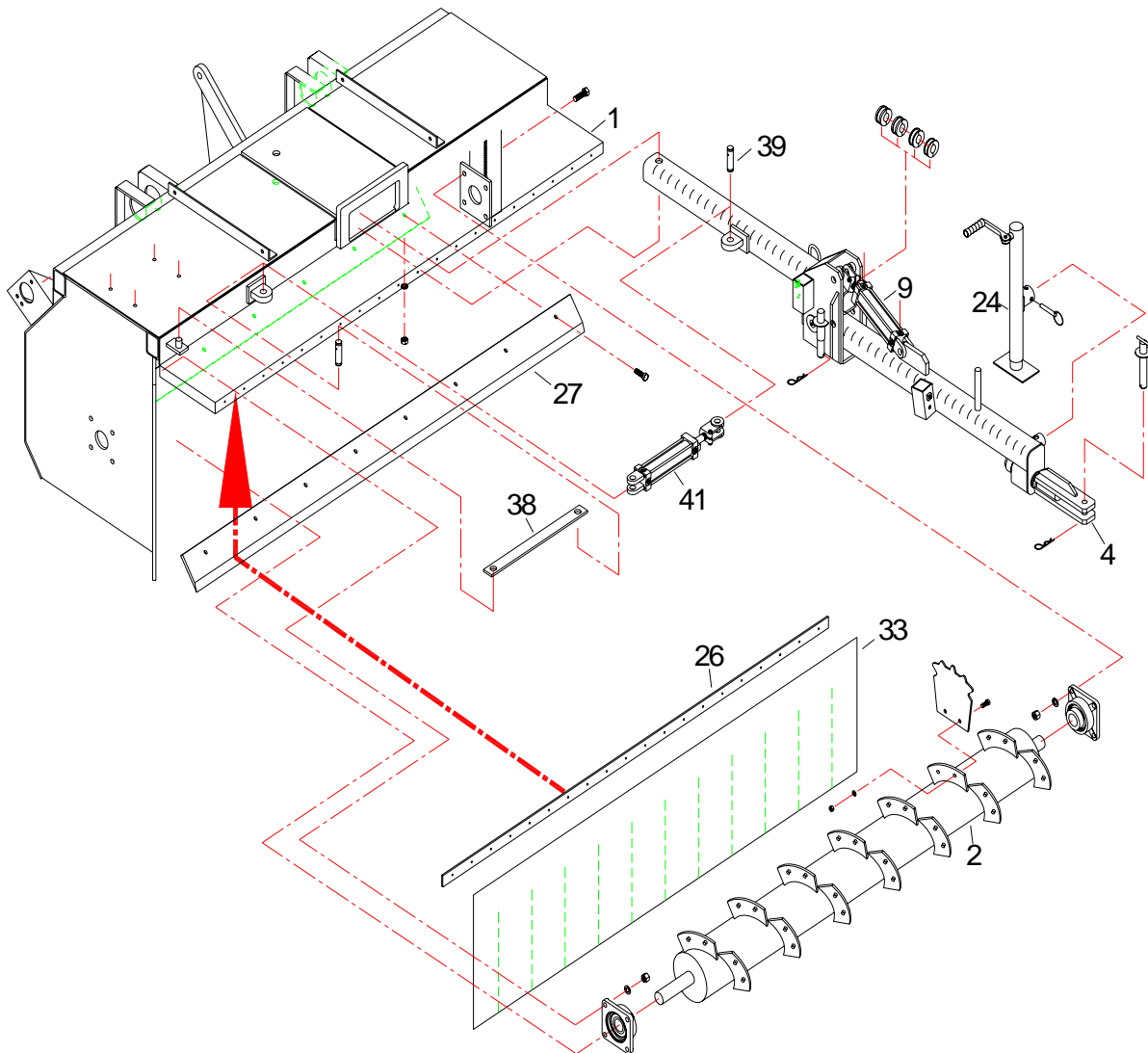
After Serial # 113

1	WR-600450	Frame Weldment
3	WR-600020	Axle Weldment See Page 6
5	WR-600709	Oil Tank Assembly See Page 7
6	HW-200108G8BXF	Bolt, Hex Head, 1/4-20 x 1-1/2 LG, G8
7	HW-202108G8C	Bolt, Hex Head, 5/16-18 x 1-1/2 LG, G8
8	WR-600616	Axle mount Pin
9	HK101253	Hydraulic Cylinder See Page 10-11
11	WR-600030	Chain Guard Weldment (ORDER WITH SERIAL #)
12	HK-100189	Pivot pin
14	WR-600010	Hyd. Motor See Page 15-16
16	WR-600004	Taper Bushing
17	WR-600003	Cylinder Sprocket UP TO SERIAL # WR-269
17	WR-600097	Cylinder Sprocket SERIAL# 269 AND UP
18	WR-600099	Taper Bushing, Motor
19	WR-600002	Sprocket UP TO SERIAL #WR-269
19	WR-600084	Sprocket SERIAL# 269 AND UP
20	WR-600050	#60 Drive Chain (87 Pitches + Connecting & Offset Link)
20	WR-600850	#60 Drive Chain (91 Pitches + Connecting link)
20	WR-600083	#80 Drive Chain +Connecting Link SERIAL #WR-269 AND UP
21	WR-600082	#80 CONNECTING LINK SERIAL # WR269 and up
22	WR-600081	#80 OFFSET LINK SERIAL #269 and up
25	WR-600070	Rear Hydraulic Cylinder Spacer 2-5/8" lg
29	See Page 13-14	Adjustment Rod
30	HK101827	Manual Canister
34	WR-600015	Oil Cooler COMPLETE
	WR-600033	Oil Cooler -(Motor ,Fan Blade & Shroud only)
35	WR-600080	Wheel Guard
36	WR-600055	Shoe
37	WR-600040	Wheel Guard Brace
40	WR-600012	Spacer

NOTE: **ITEM 20** MACHINES AFTER Serial # WR-224 and up to Serial # WR-269
 USES 91 PITCHES of #60 CHAIN
 Serial WR-269 and on Used #80 CHAIN

WR-1F PARTS

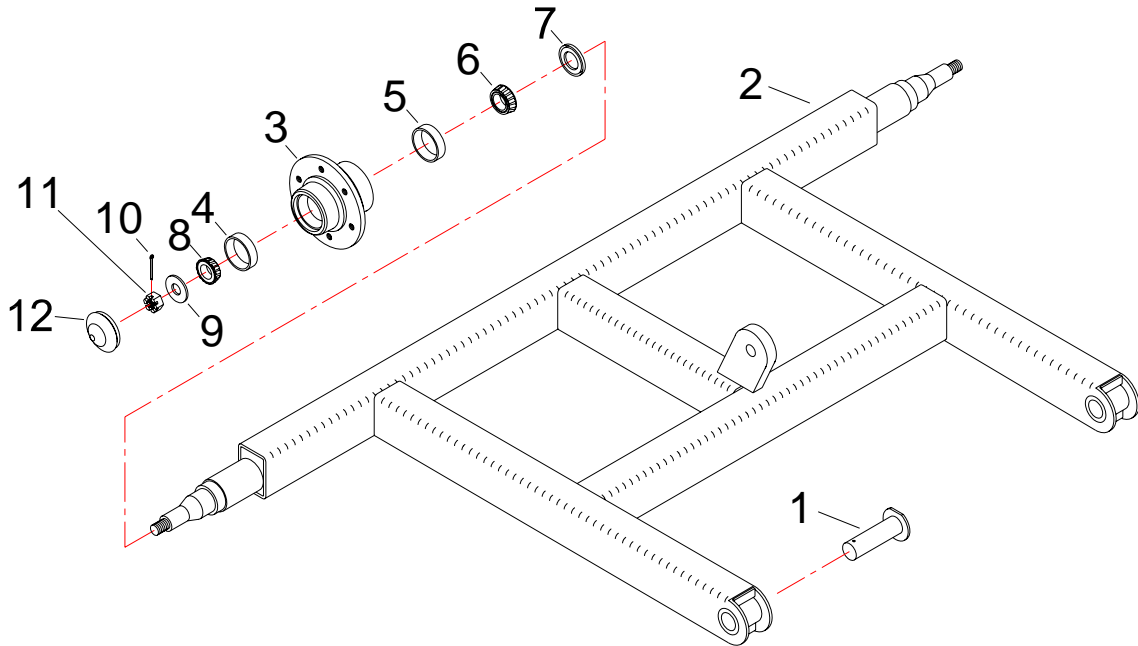
After Serial # 113



1	WR-600450	Frame Weldment	
2	WR-600500	Cylinder Weldment	See Page 9
4	WR-600250	Tongue Assembly	See Page 8
9	HK101253	Hydraulic Cylinder	See Page 10-11
24	HK-101470	Jack Stand	
	SP-200036	Jack Stand Mount (not Shown)	
26	WR-600056	Bonding Strap	
27	WR-600401	Cutter Blade	
33	WR-600006	Rubber shield (92")	
38	WR-600014	Cylinder Lock	
39	WR-600013	Side Shift Pin	
41	HK-100700	Hydraulic Cylinder	See Page 12

AXLE ASSEMBLY

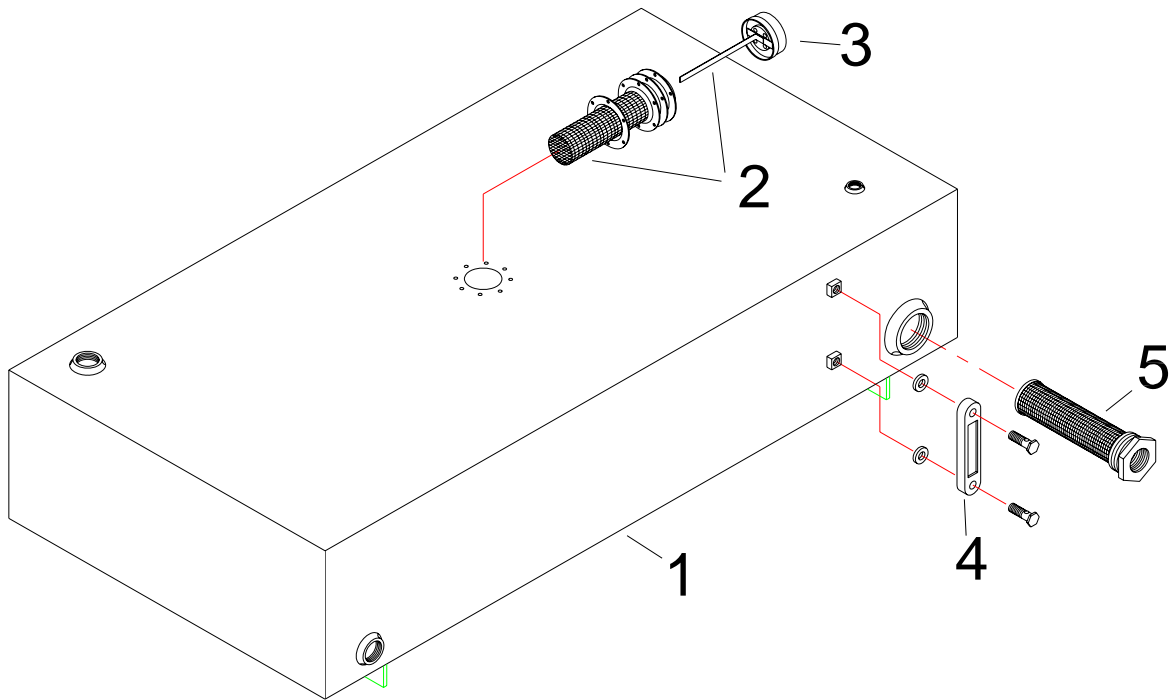
After Serial # 113



1	WR-600616	Axle Mount pin
2	WR-600020	Axle Weldment
3	SEE KIT	Hub (Not Sold Separately)
4	HK-100736	Outer Race
5	HK-100738	Inner Race
6	HK-100739	Inner Bearing
7	HK-100740	Wheel Seal
8	HK-100737	Outer Bearing
9	SEE KIT	Washer, Flat, 7/8" (Not Sold Separately)
10	SEE KIT	Pin Cotter 3/16" x 1-3/4" (Not Sold Separately)
11	SEE KIT	Wheel Nut 7/8NC x 14 (Not Sold Separately)
12	SEE KIT	Hub Cap (Not Sold Separately)
	HK-101326	Hub w/Bearing and Seal (include items 3,4,5,6,7, and 8)
	HK-100612	Spindle Kit Include Item 9,10,11,12, and spindle

OIL TANK ASSEMBLY

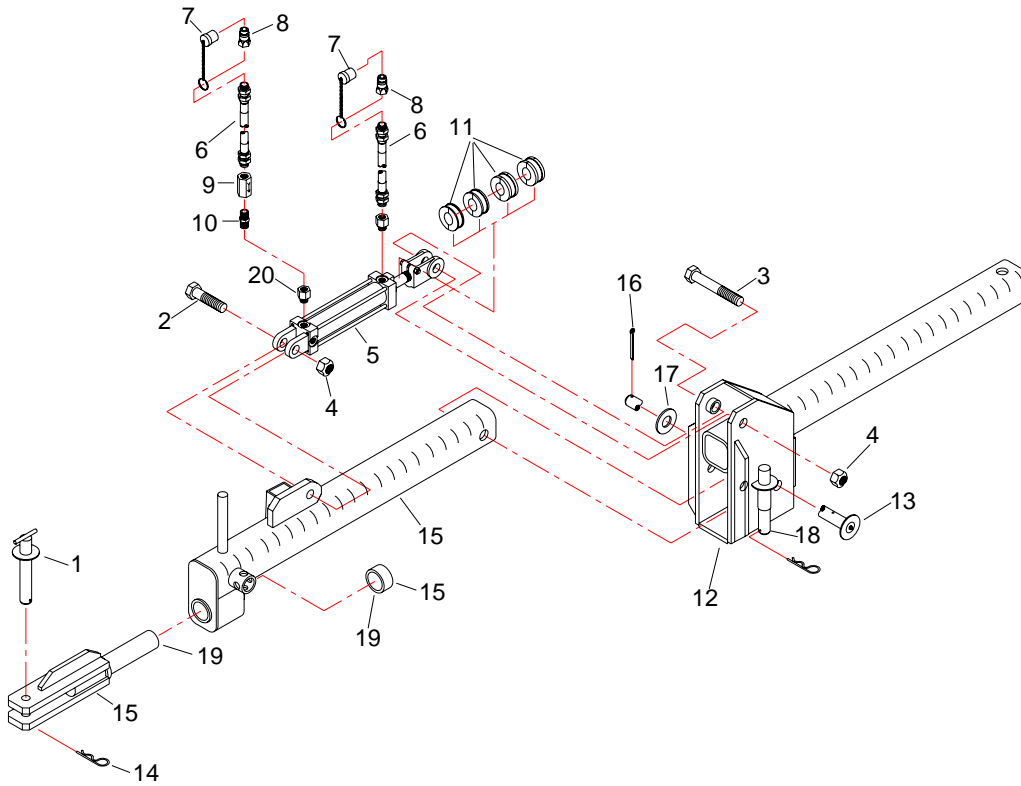
After Serial # 113



1	WR-600709	Tank Assembly
2	HK-100421	Oil Cap Assembly
3	HK-100422	Cap Only
4	HK-101828	Oil Level And Temp.
5	HK-100778	Tank Strainer

Hydraulic Tongue

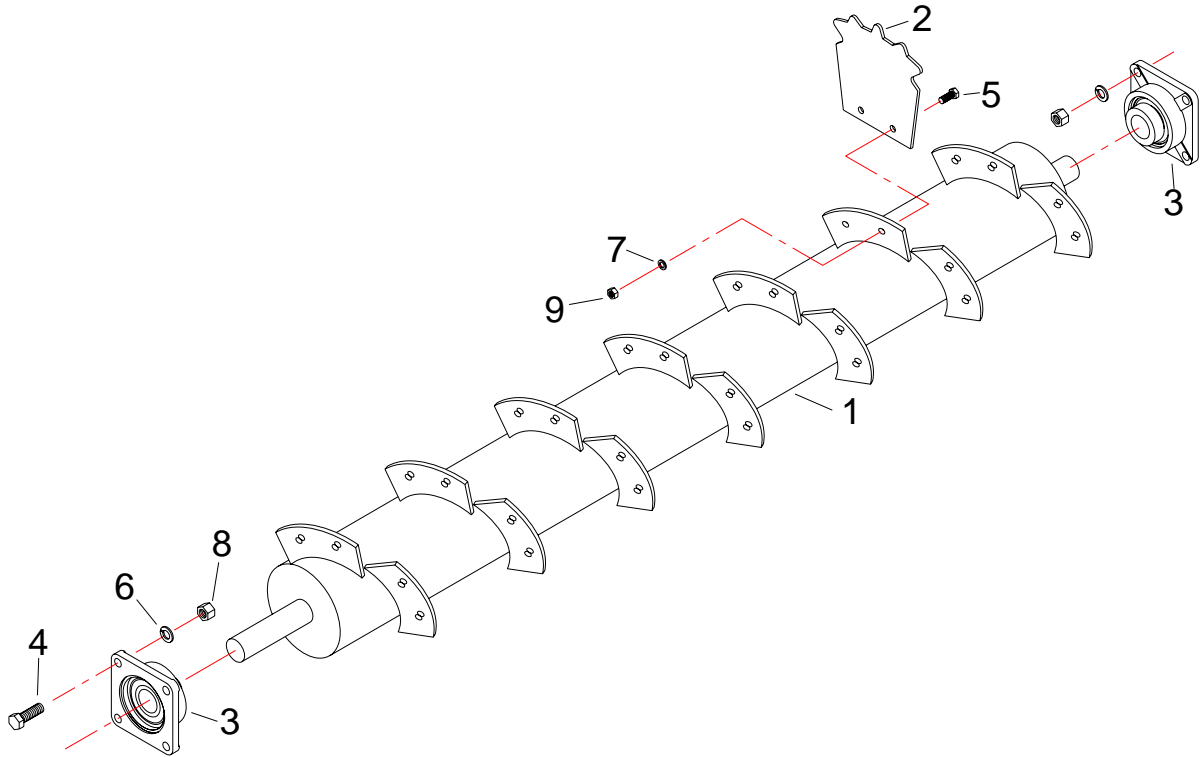
After Serial # 113



1	HK-101238	Hitch Pin
2	HW-220128G8Z	Bolt, HH ZP, 1-8UNC x 4, GR8
3	HW-220148G8Z	Bolt, HH, ZP, 1-8UNC x 6-1/2, GR8
4	HW-301220NEZ	Nut, Hex, 1-8NC, ZP
5	HK-101253	Hydraulic Cylinder (See Page 10-11)
6	HK-100992	Hydraulic Hose
7	HK-100993	Quick Coupler Cap
8	HK-100965	Quick Coupler
9	HK-101252	Metering Valve
10	HK-100963	Nipple, 1/2 MP x 1/2 MP
11	HK-101260	Stroke Control Kit
12	WR-600260	Tongue Rear Link
13	HK-100189	Pivot Pin
14	HW-500224	Hair Pin
15	WR-600260	Tongue Front Link
16	HW-427112	Cotter Pin 1/4 x 2
17	HW-325222Z	Washer, Flat, 1-1/8 ID x 2-3/4 OD
18	HK-101622	Safety Pin With Hair Pin
19	HK-101663	Hitch Kit
20	HK-100974	Adaptor

CYLINDER

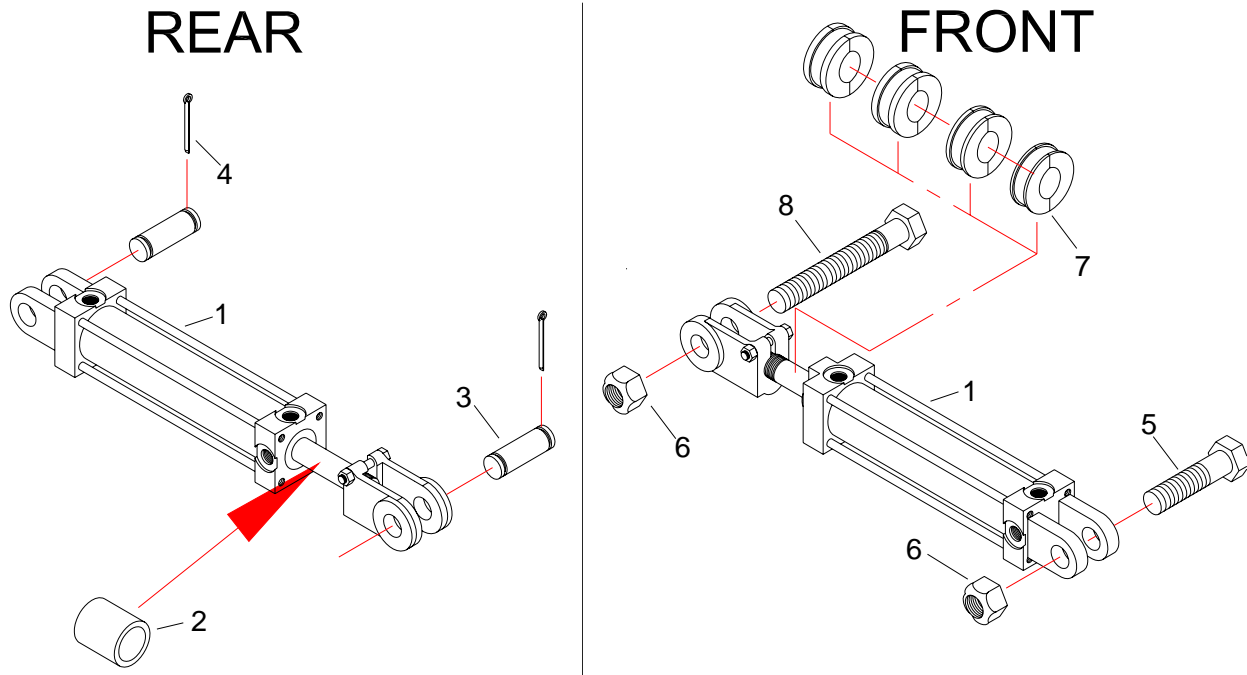
All Units



Item	Part #	Description
1	WR-600500	Cylinder
2	WR-600506	Paddle
2	WR-600506H	Harden Paddle
3	WR-600001	Bearing, Cylinder
4	HW-216116G8Z	Bolt, Hex, 3/4-10 x 2-1/2 Lg., Grade 5, Z P
5	HW-208108G5Z	Bolt, hex, 1/2-13 x 1-1/2 Lg., Grade 5, Z P
6	HW-335216Z	Washer, Lock, 3/4, Zinc Plated
7	HW-335208Z	Washer, Lock, 1/2, Zinc Plated
8	HW-300216ZG5	Nut, Hex, 3/4-10, Zinc Plated, Grade 5
9	HW-300208ZG5	Nut, Hex, 1/2-13, Zinc Plated, Grade 5
kit	WR-600513	Paddle Kit Includes (30 Paddles, 60 bolts, washers and nuts)

FRONT and REAR HYDRAULIC CYLINDER with RELATED PARTS

All Units

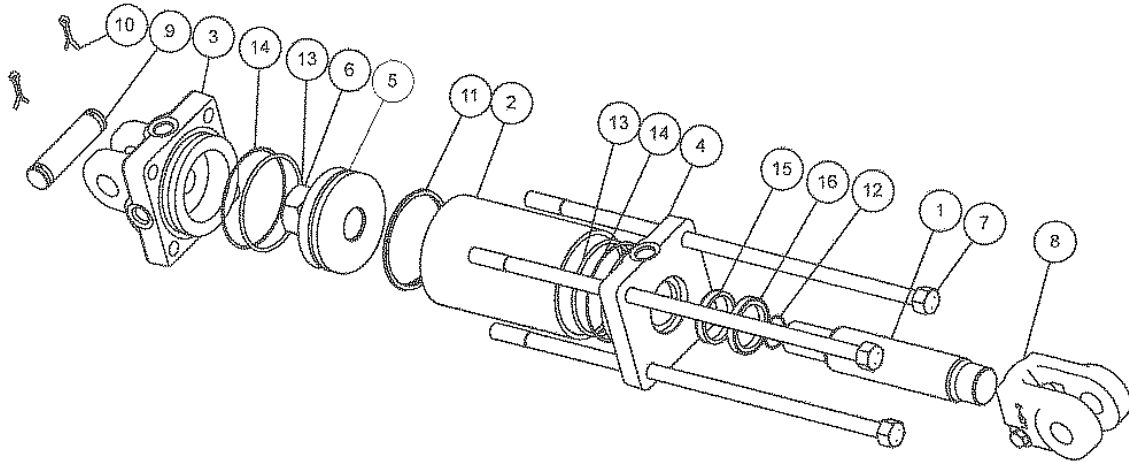


1	HK-101253	Hydraulic Cylinder (SEE PAGE 11)
2	WR-600070	Rear Hydraulic Cylinder Spacer (After Serial # 113 [1-20-09] 2-5/8")
2	WR-600070	Rear Hydraulic Cylinder Spacer (Before Serial # 114 [1-20-09] 1-7/8")
3	HK-101307	Cylinder Pin
4	HW-425112	Pin, Cotter
5	HW-220128G8Z	Bolt, HH, ZP, 1-8NC x 4 LG, Grade 8
6	HW-301220NEZ	Nut, Hex, 1-8NC, ZP
7	HK-101260	Stroke Control
8	HW-220148G8Z	Bolt, HH, ZP, 1-8NC x 6-1/2LG, Grade 8

FRONT and REAR HYDRAULIC CYLINDER

HK-101253

All Units



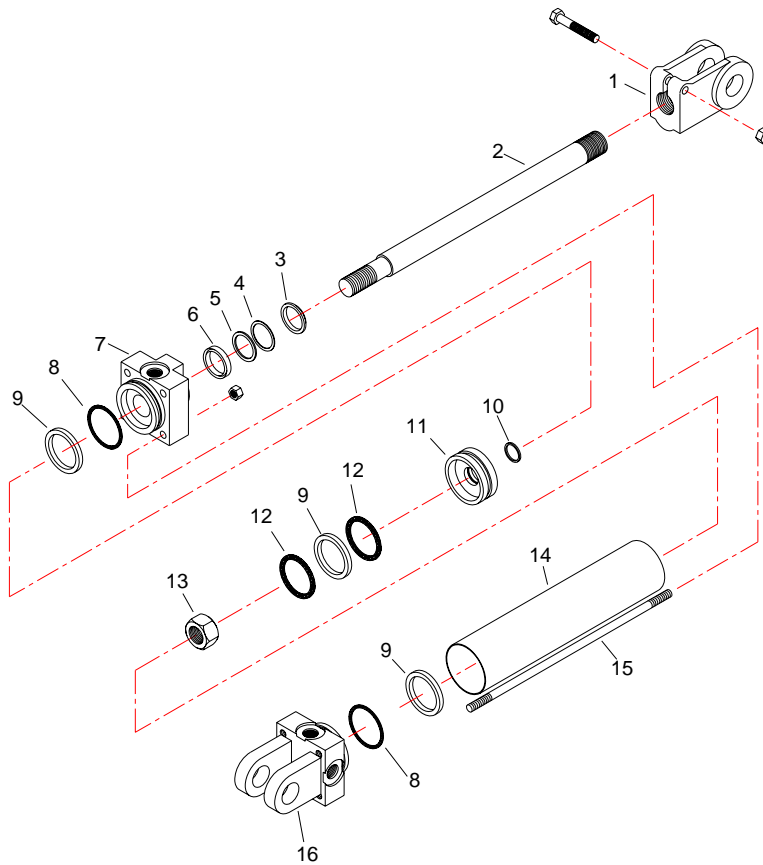
1	N/A	Piston Rod	1
2	N/A	Tube	1
3	1415005SF	Butt	1
4	0815BBGSF	Gland	1
5	071500244	Piston	1
6	220000210	Lock Nut	1
7	N/A	Tie-Rod	4
8	100000423	Clevis Assembly	1
9	190400001	Clevis Pin	2
10	220001504	Cotter Pin	4
11	240060334	Crown Seal	1
12	240000022	O-Ring	1
13	240000232	O-Ring	1
14	240061232	BU-Washer	2
15	240037106	U-Cup	2
16	250014137	Wiper	1
*	240020185	U-Cup	1
	PMCK-SAE-33000	Packing Kit (See Note)	

Note: Items 11, 12, 13, 14, 15, and 16 included in Kit

SEAL KIT 218-819 FOR MACHINE SERIAL # 207 AND AFTER

SIDE SHIFT CYLINDER # HK-100700

After Serial # 113

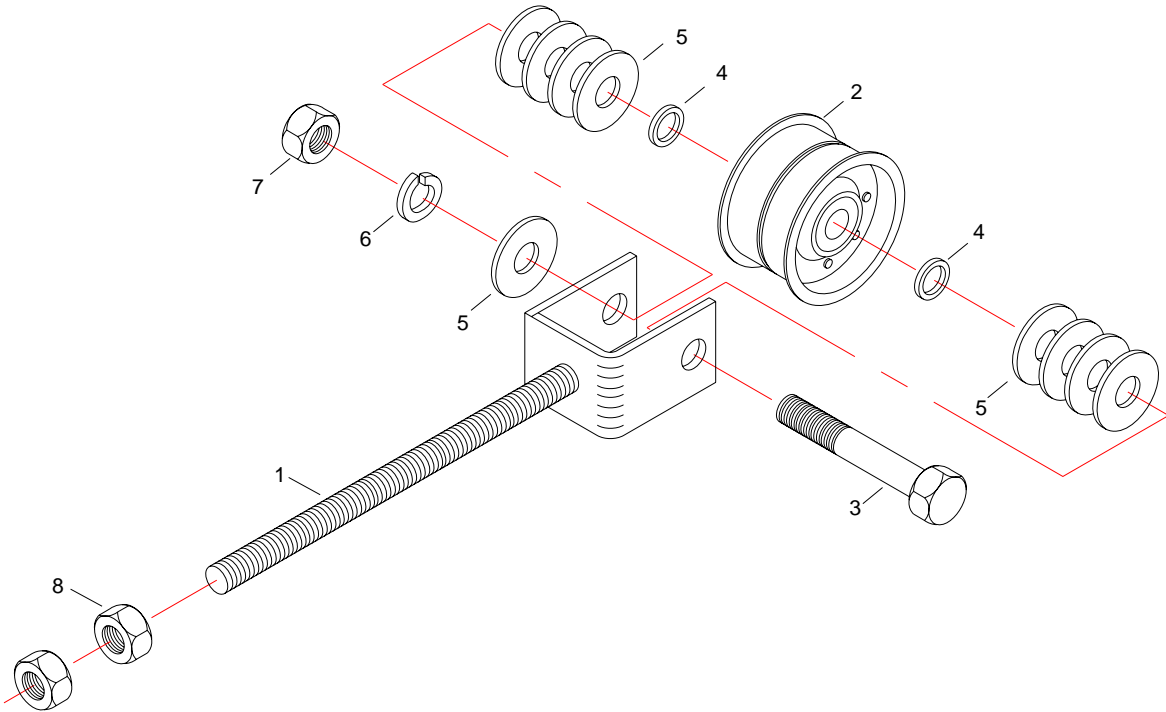


1	100000425	Clevis		1
2	010400008	Piston Rod		1
3	See Note	Wipe	(Not Sold Separately)	1
4	See Note	UB-Washer	(Not Sold Separately)	1
5	See Note	O-Ring	(Not Sold Separately)	1
6	See Note	U-Cup	(Not Sold Separately)	1
7	081100101	Gland		1
8	See Note	BU-Washer	(Not Sold Separately)	2
9	See Note	O-Ring	(Not Sold Separately)	3
10	See Note	O-Ring	(Not Sold Separately)	1
11	071100004	Piston		1
12	See Note	BU-Washer, Leather	(Not Sold Separately)	3
13	220000208	Lock, Nut		1
14	051110063A	Tube		1
15	170103121	Tie Rod		4
16	141100024	Butt		1
	PMCK-8400	PACKING KIT (SEE NOTE)		

Note: Items 3, 4, 5, 6, 8, 9, 10, & 12 included in Kit

DRIVE CHAIN ADJUSTMENT ASSEMBLY

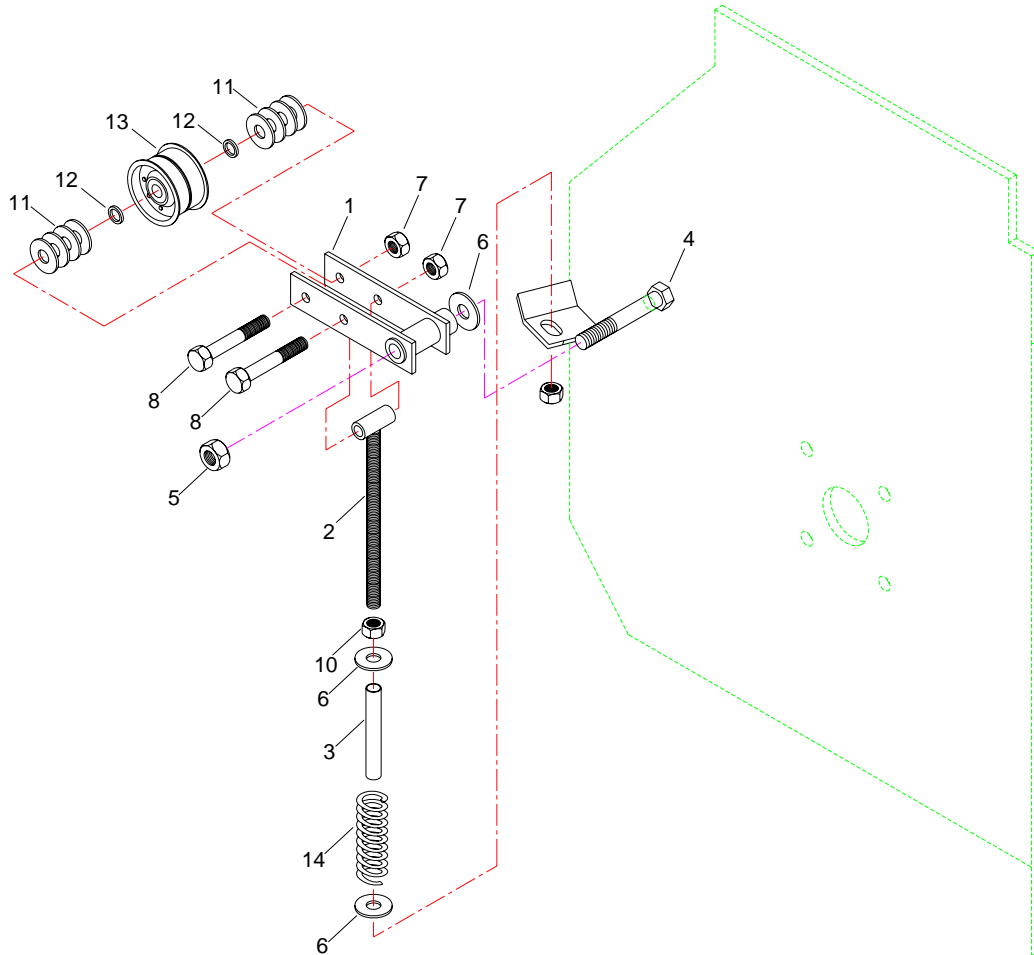
Before Serial # 273



1	WR-600046	Adjustment Rod
2	HK-101295	Idler
3	HW-208124G5Z	Bolt, Hex, 1/2-13NC x 3-1/2" LG, Grade 5, Zinc Plated
4	HK-100961	Shim-Spacer
5	HW-325208Z	Washer, Flat, 1/2, Zinc Plated
6	HW-335208Z	Washer, Lock, 1/2", Zinc Plated
7	HW-300208ZG5	Nut, Hex, 1/2-13NC, Zinc Plated, Grade 5
8	HW-300212ZG5	Nut, Hex, 5/8-11NC, Zinc Plates, Grade5

DRIVE CHAIN ADJUSTMENT ASSEMBLY

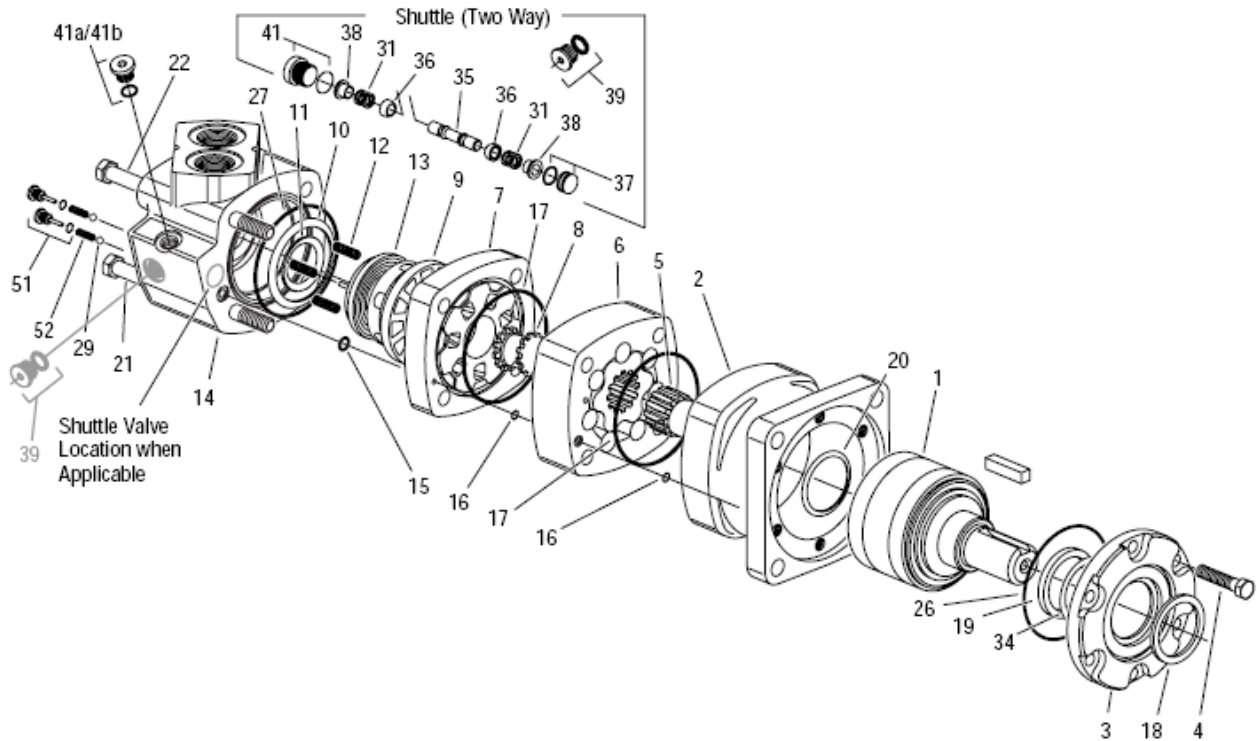
After Serial #272



1	WR-600350	Chain Tension Arm Weldment
2	WR-600355	Chain Adjustment Rod Weldment
3	WR-600359	Chain Tension Spring Guard
4	HW-216136G8C	Bolt 3/4-10 x 5", Grade 8 Cadmium Plated
5	HW-301216TLZ	Nut, Top Lock, 3/4-10, zinc Plated
6	HW-325216Z	3/4 USS Flat Washer Zinc Plated
7	HW-301208SC	Nut Stover Lock 1/2-13 Cadmium Plated
8	HW-208120G5Z	Bolt, 1/2-13 x 3" LG Grade 5
9	HW-301212NEZ	Nut, Nylon Lock, 5/8-11, Zinc Plated
10	HW-300208ZG5	Nut, 1/2-13, Zinc Plated, Grade 5
11	HW-325208Z	1/2, USS, Flat Washer, Zinc Plated
12	HK-100961	Shim Spacer
13	HK-101295	Idler
14	HK-100726	Spring

WR-60010 CYLINDER MOTOR

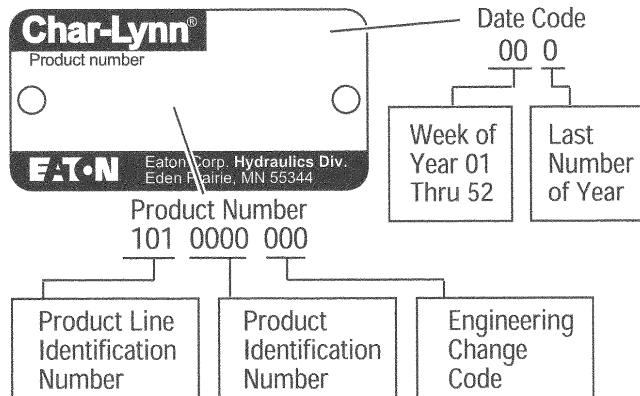
After Serial # 113



How to Order Replacement Parts

Each Order Must Include the Following:

1. Product Number
2. Date Code
3. Part Name
4. Part Number
5. Quantity of Parts



WR-600010 CYLINDER MOTOR

After Serial # 113

1	201837-001	Shaft and Bearing Kit (1-1/2" Straight)
	14393-010	Key (for 1-1/2 Straight Shaft)
2	201839-001	Housing Bearing(SAE CC) (Standard
3	201840-001	Retainer Front
4	14253-000	Screw, Cap
5	21373-004	Drive
6	8507-004	Geroler
7	21666-000	Plate Valve
8	8508-000	Drive Valve
9	8497-000	Valve
10	SEE NOTES	Seal, Face Outer (Not Sold Separately)
11	SEE NOTES	Seal Face Inner (Not Sold Separately)
12	6203-000	Spring, Compression
13	21317-000	Balance Ring w/ pins
14	8502-004	Housing, Valve (1-5/16 Str. Thrd O-ring Ports-7/16-20 Case Drain Port
15	SEE NOTES	Seal (Not Sold Separately)
16	SEE NOTES	Seal (Not Sold Separately)
17	SEE NOTES	Seal (Not Sold Separately)
18	SEE NOTES	Dust Seal (Not Sold Separately)
19	SEE NOTES	Seal, Shaft (Not Sold Separately)
20	SEE NOTES	Seal, Shaft Face (Not Sold Separately)
21	14409-004	Screw, Cap
22	14409-008	Screw, Cap
26	SEE NOTES	Seal (Not Sold Separately)
27	SEE NOTES	Seal (Not Sold Separately)
28	05128-000	Seal
29	18026-000	Ball, Steel
31	230079-000	Spring
34	SEE NOTES	Ring, Back-up (Not Sold Separately)
35	8566-000	Piston, Shuttle
36	8567-000	Puppet
37	201868-002	Plug Assembly
37	14502-012	O-ring
38	8755-000	Sleeve, Dash pot
39	9072-002	Plug Assembly
39	250003-903	O-ring
41	9266-003	Plug Assembly (7/16-20 Case Drain Plug
41	250003-904	O-ring
51	8350-000	Check Plug Assembly
51	250003-903	O-ring
52	6464-000	Spring Compression

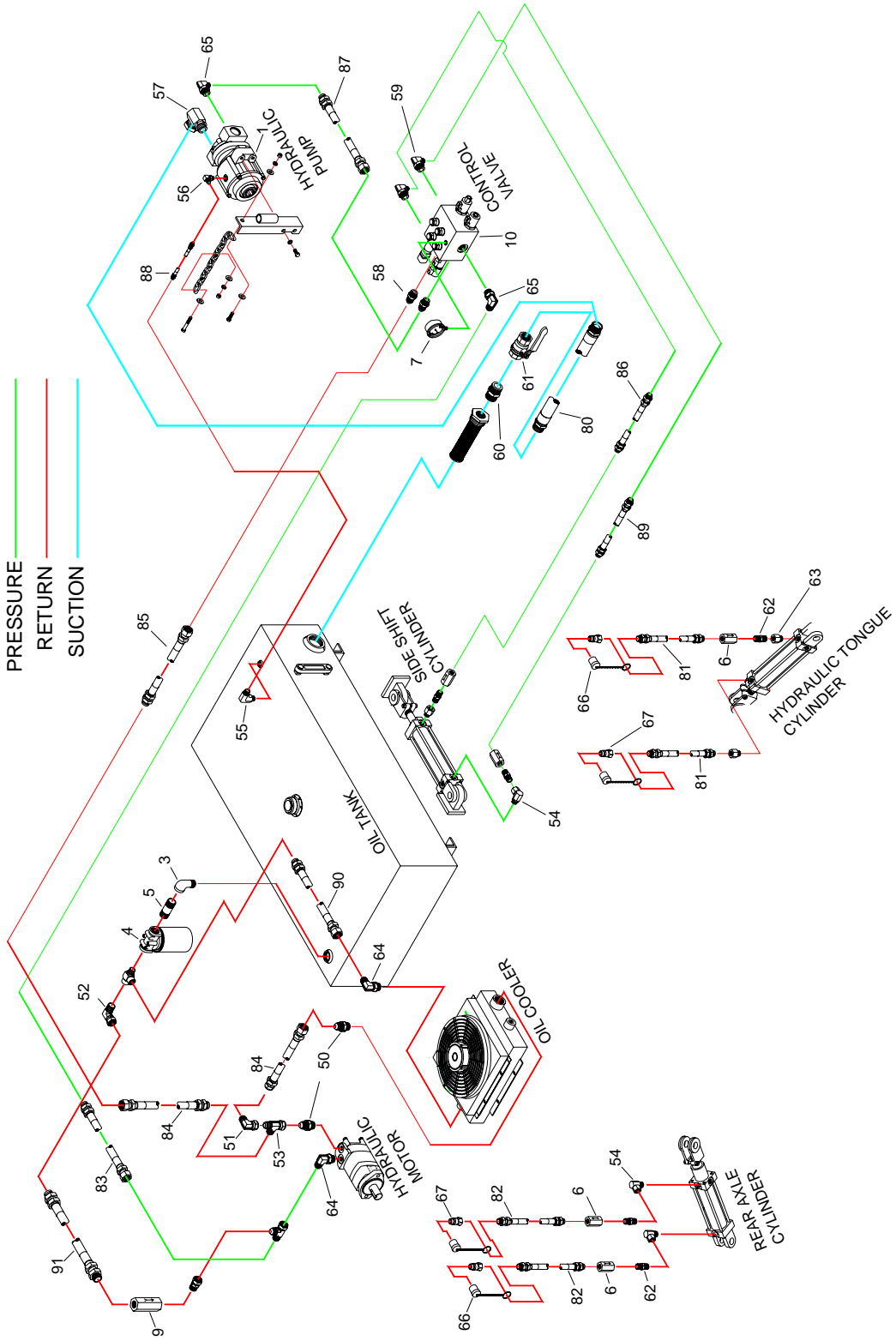
Seal Kit, Rear part # 61238-000 (Items # 10,11,15,16,17,26,27)

Seal Kit, Shaft Part # 61237-000(Items# 17,18,19,20,34)

Seal kit, Complete Part # 61285-000 (Items 10,11,15,16,17,18,19,20,26,27,34)

HYDRAULIC KIT

After Serial # 113



HYDRAULIC KIT

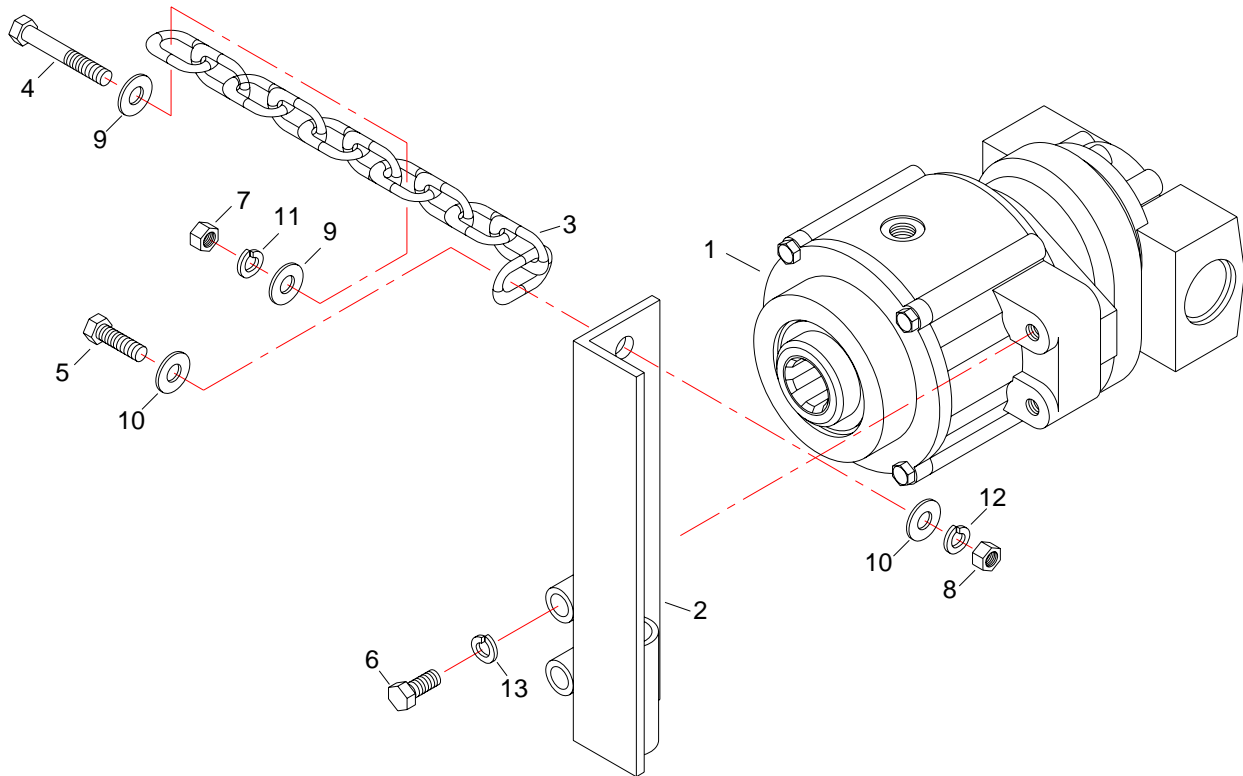
After Serial # 113

1	WR-600901	Pump and Torque Arm Kit	See Page 19-21
3	HK-100775	Street Elbow 90° 3/4"	
4	HK-100722	Filter Assembly	
5	HK-101051	Nipple, Pipe Sch 40, 3/4 x 4" LG BLK Pipe	
6	HK-101252	Metering Valve	
7	HK-101591	Gauge 2-1/2" Liquid Filled	
9	WR-600922	Check Valve	
10	See Page 23-31	Electric Double Spool Valve (see note)	
50	WR-600085	Adapter 12MJ- 16 MORB	
51	HK-101576	90° Elbow 12MJ – 12FJS	
52	HK-100989	90° Elbow 3/4MP – 3/4FPS	
53	WR-600086	Tee 12MJIC – 12FJIC – 12MJIC	
54	HK-100970	90° Elbow 8ORB – 1/2FPX	
55	HK-101582	90° Elbow 6MJ - 6MP	
56	HK-101642	90° Elbow 6MJ – 6MBPX	
57	WR-600940	90° Elbow 20m ORB – 20FPS	
58	HK-101759	Adapter 12MJ – 12MO	
59	HK-101629	90° Elbow 12Mj – 12MORB	
60	HK-100776	Steel Nipple 1-1/4MP - 1-1/4MP	
61	HK-100777	Ball Valve	
62	HK-100963	Nipple 1/2MP – 1/2MP	
63	HK-100974	Adapter 8ORB – 1/2F NPT	
64	WR-600087	90° Elbow 12MJ – 16MORB	
65	HK-101633	90° Elbow 12 MORB – 12FJ	
66	HK-100993	Quick Coupler Caps	
67	HK-100965	Quick Coupler	
80	HK-100980	Suction (Tank to Pump)1-1/4 x 108" lg	
80	WR-600614	Suction (Tank to Pump) 1-1/4 x 126" lg	After Serial #189
81	HK-100992	Front Hydraulic Cylinder to Tractor 1/2 x 96" lg	
82	WR-600941	Rear Hydraulic Cylinder to tractor 1/2 x 190" lg	
83	WR-600091	Control Valve to Motor 3/4 x 130	
84	WR-600088	Motor to Oil Cooler 3/4 x 46 lg	
85	WR-600090	Control Valve Return to Motor Return 3/4 x 135" lg	
86	WR-600934	Control Valve to Side Shift Cylinder (inside) 1/2 x 66" lg	
87	WR-600944	Hydraulic Pump to Control Valve Pressure 3/4 x 84"lg	
88	HK-101641	Pump Case Drain to Tank 1/4 x 132" lg	
88	WR-600613	Pump Case Drain to Tank 1/4 x 150" lg	After Serial # 189
89	WR-600942	Control Valve to Side Shift Cylinder (outside) 1/2 x 74"lg	
90	WR-600089	Oil Cooler to Filter 3/4 x 26" lg	
91	WR-600089	By-Pass Hose (Filter to Motor) 3/4 x 26"	
91	WR-600615	By-pass Hose (Filter to Motor) 3/4 x 36" lg	After Serial # 189

NOTE: EATON Control Valve up to SERIAL WR-261 REXROTH up to WR279
NEW EATON VALVE afterwards.

HYDRAULIC PUMP

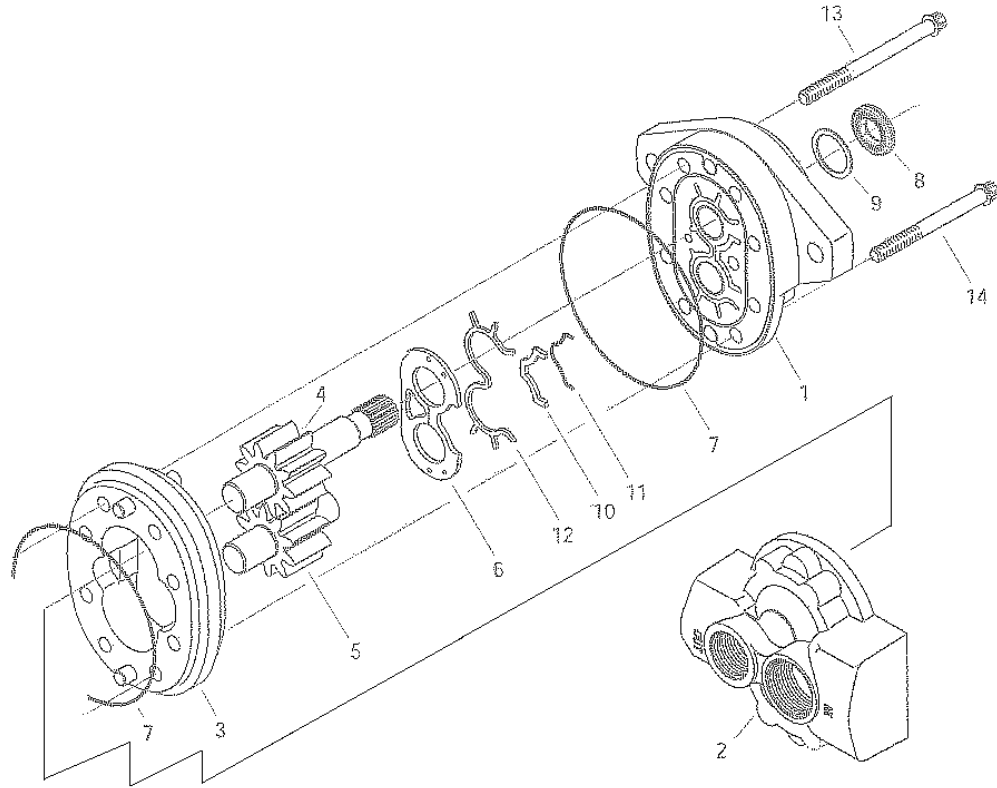
All Units



1	WR-600005	Hydraulic Pump See Page 20-21)
2	HK-101646	Torque Arm
3	HK-101261	Chain (18 Link)
4	HW-204116G5Z	Bolt, 3/8-16NC x 2-1/2
5	HW-206106G5Z	Bolt, 7/16-14NC x 1-1/4
6	HW-208112G5Z	Bolt, 1/2-13NC x 2
7	HW-300204ZG5	Nut, 3/8-16NC
8	HW-300206ZG5	Nut, 7/16-14NC ZP
9	HW-325204Z	Washer, Flat, 3/8
10	HW-325206Z	Washer, Flat, 7/16
11	HW-335204Z	Washer, Lock, 3/8
12	HW-335206Z	Washer, Lock, 7/16
13	HW-335208Z	Washer, Lock, 1/2
	WR-600901	Pump and Torque Arm Kit (Items 1 – 13)

PUMP

All Units

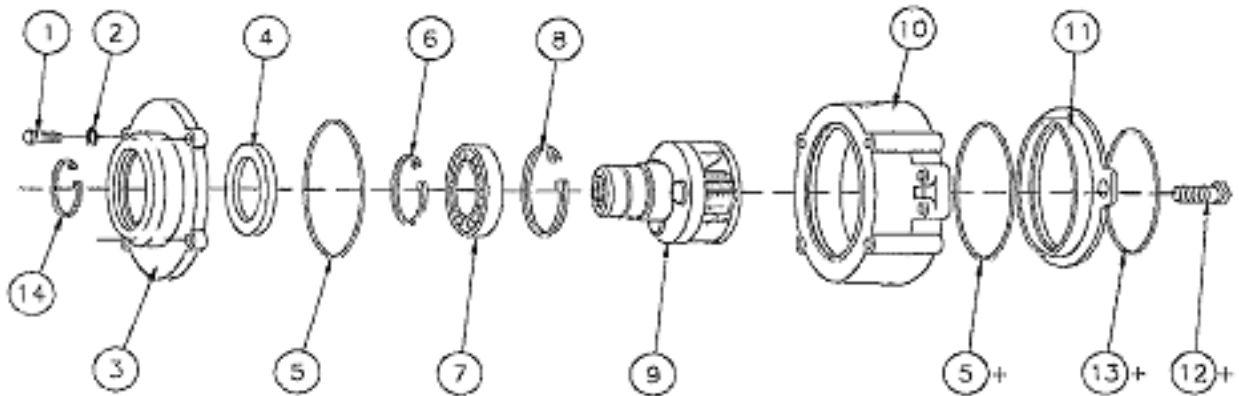


1	NA	Front Plate
2	25500-51	Back Plate
3	N/A	Body
4	N/A	Drive Gear (Spline Shaft)
5	N/A	Idle Gear
6	SEE NOTE	Wear Plate (Not Sold Separately)
7	SEE NOTE	O-Ring (Not Sold Separately)
8	SEE NOTE	Shaft Seal (Not Sold Separately)
9	SEE NOTE	Washer (Not Sold Separately)
10	SEE NOTE	Bearing Seal (Not Sold Separately)
11	SEE NOTE	Molded O-Ring (Not Sold Separately)
12	SEE NOTE	Back-Up Basket (Not Sold Separately)
13	N/A	Cap Screw
14	N/A	Cap Screw
	25500-901	Seal Kit

NOTE: KIT CONTAINS ITEMS 6,7,8,9,10,11,AND 12

STEP UP BOX

All Units

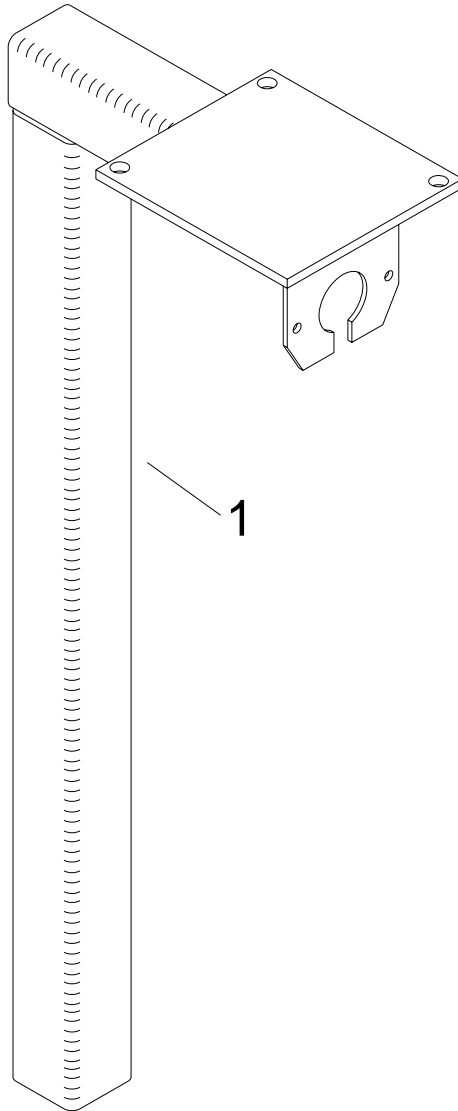


1	N/A	Cap Screw, 5/16 x 1 G5
2	N/A	Serrated Washer
3	N/A	Front Plate
4	16253-34	Shaft seal
5	16015-58	O-Ring (2 Used)
6	16128-10	Retaining Ring
7	WR-600621	Carrier Bearing
8	SEE NOTE	Retaining Ring (Not Sold Separately)
9	N/A	Carrier Assembly
10	N/A	Housing
11	N/A	Adapter Plate
12	N/A	
13	16015-55	O-Ring
14	16075-300	Retaining Ring

Seal Kit, Complete, part # 77000-900 (Items 4,5,6,8,13,14)

VALVE BRACKET

UP TO SERIAL # 207

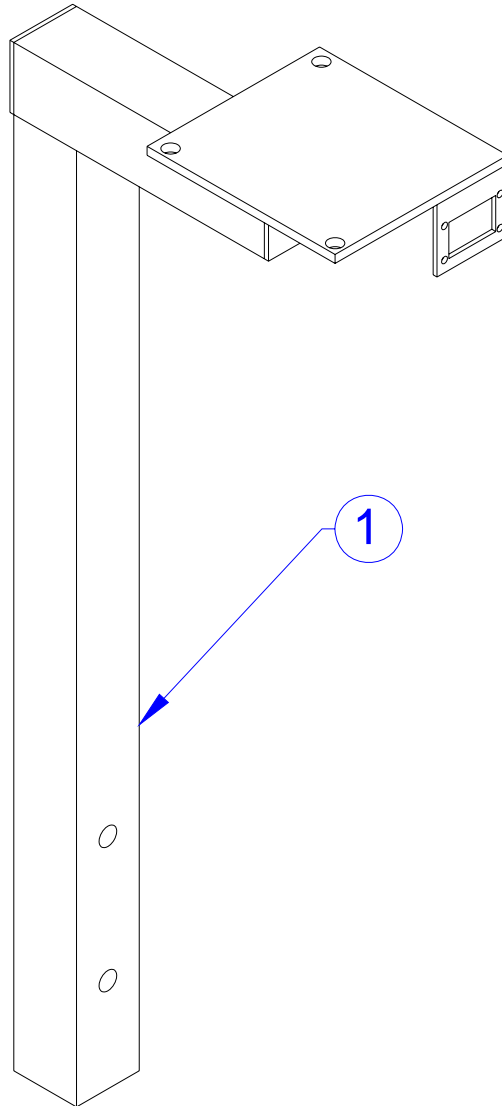


1	WR-600051	Electric Double Spool Valve (see note)
1	DB-400144	Electric Double Valve Bracket UP TO SERIAL # 261

NOTE: EATON Control Valve up to SERIAL WR-261 REXROTH afterwards

VALVE BRACKET

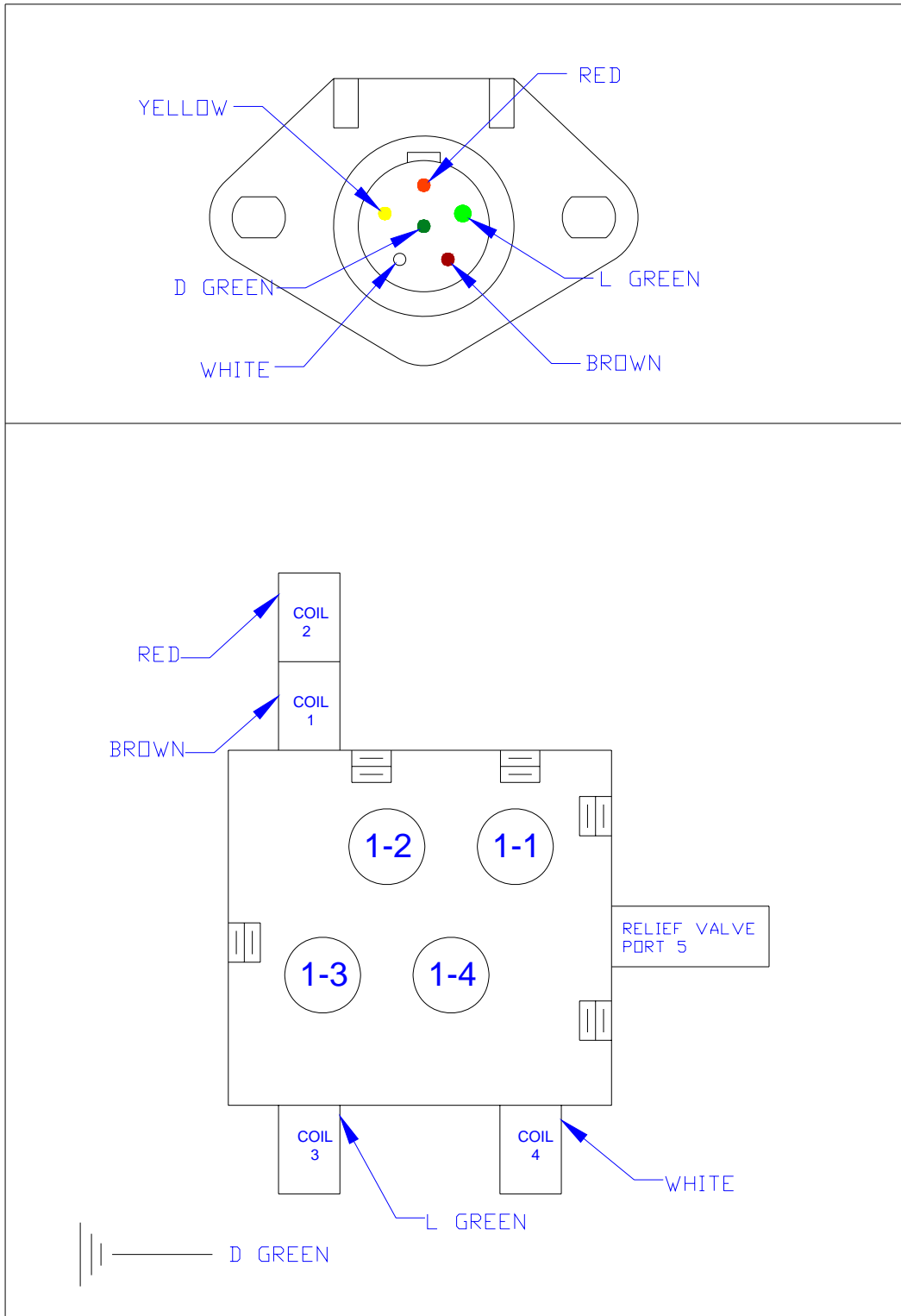
MAY 1,2012 AND AFTERWARD



1	DB-400220	Electric Double Spool Valve Mount

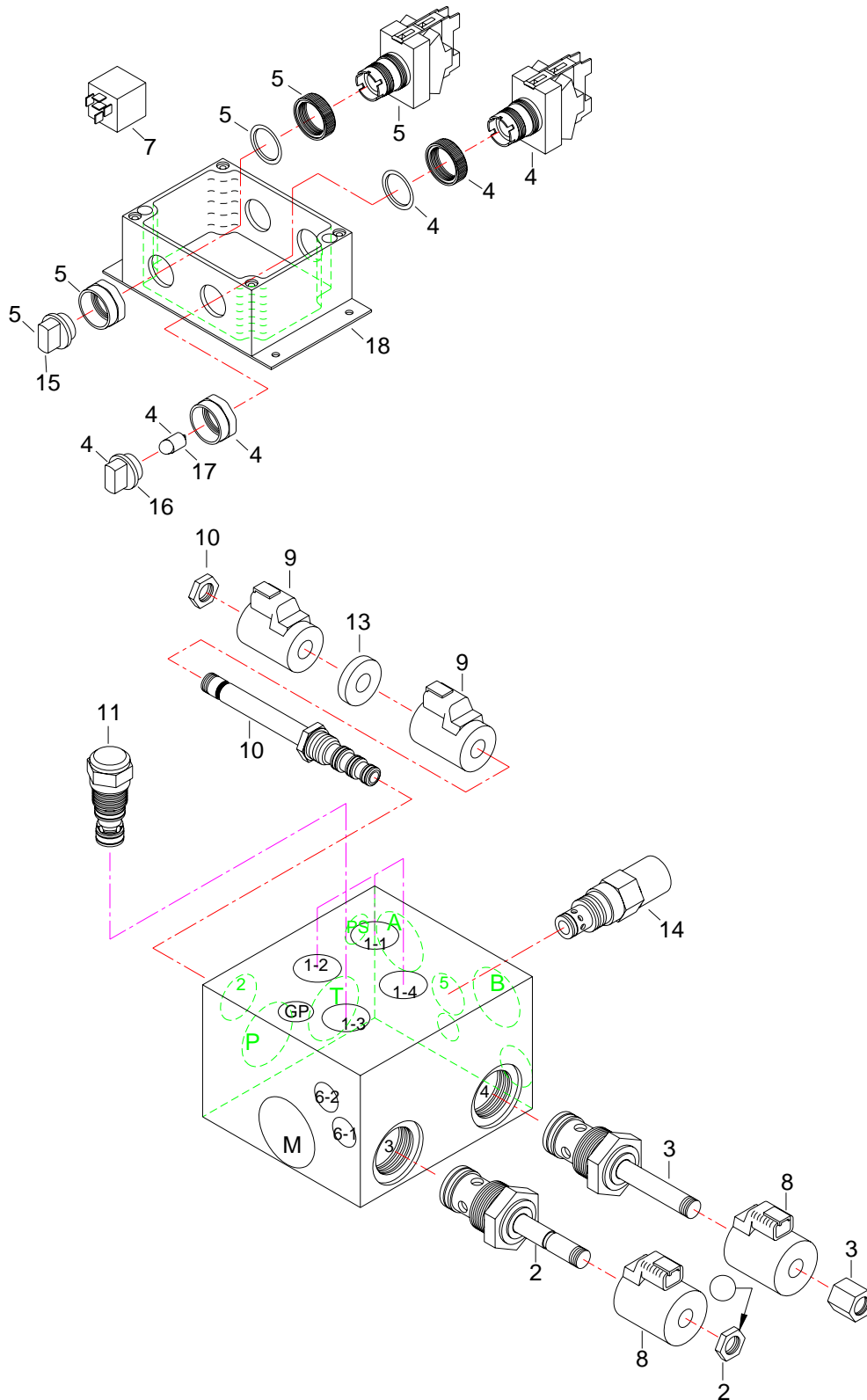
EATON ELECTRICAL PLUG DIAGRAM

UP TO SERIAL # WR-261



EATON ELECTRIC CONTROL VALVE

UP TO SERIAL # WR-261



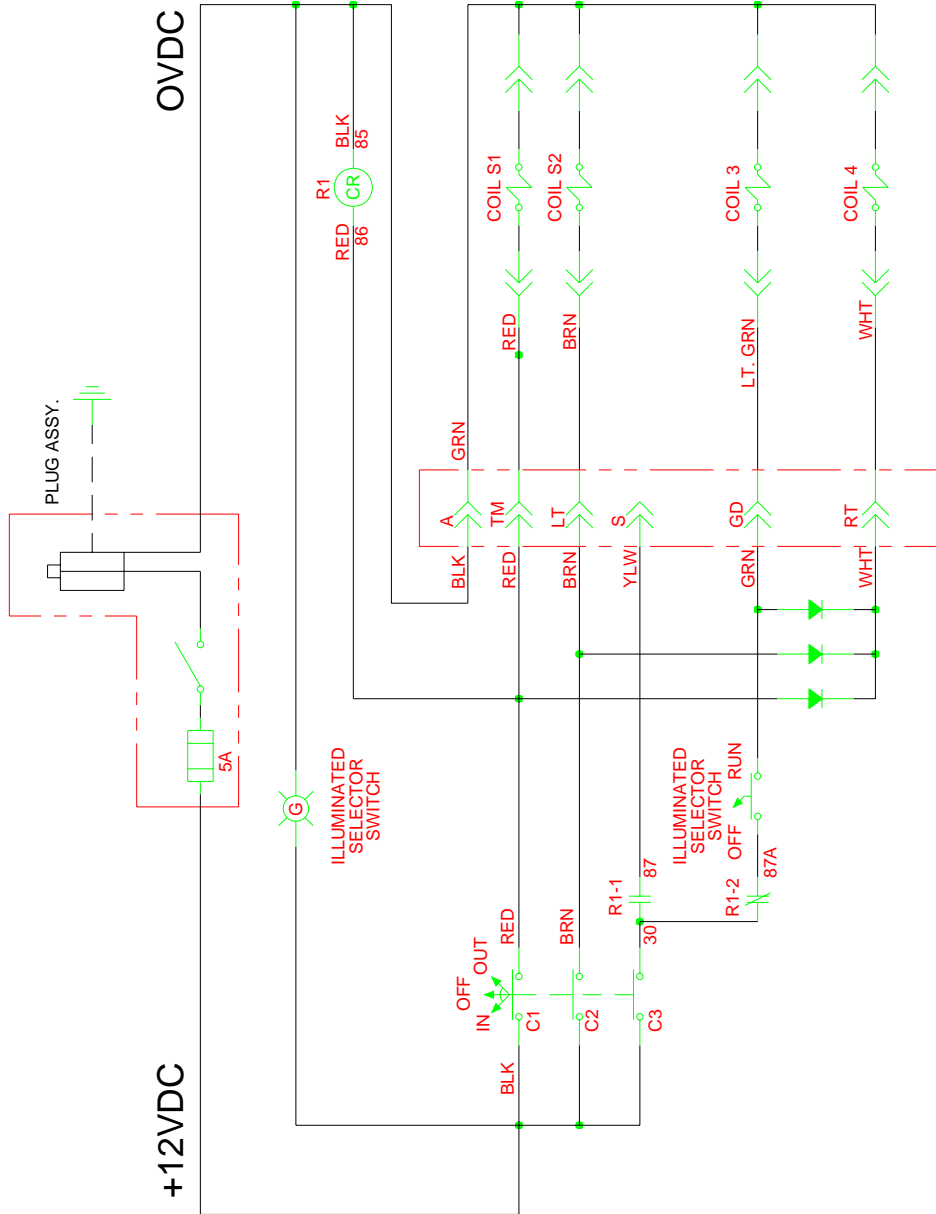
EATON ELECTRIC CONTROL VALVE

UP TO SERIAL # WR-261

1	DB-400142	Electric Control Valve
2	DB-400164	Solenoid Valve
3	DB-400163	Solenoid Valve
4	DB-400148	2 Pos. Illuminated Selector Switch
5	DB-400149	3 Pos. Selector Switch
7	DB-400151	Relay
8	DB-4001161	12VDC Coil w/Connector
9	DB-400160	12VDC Coil w/Connector
10	DB-400159	Solenoid Valve
11	DB-400158	Diff. Press Sense Valve
13	DB-400156	Spacer
14	DB-400155	Relief Valve
15	DB-400150	Black Knob
16	HK-101811	Green Knob
17	HK-101813	Bulb
18	WR-600612	Double Spool Control Box Complete

EATON ELECTRICAL SCHEMATIC

UP TO SERIAL # WR-261

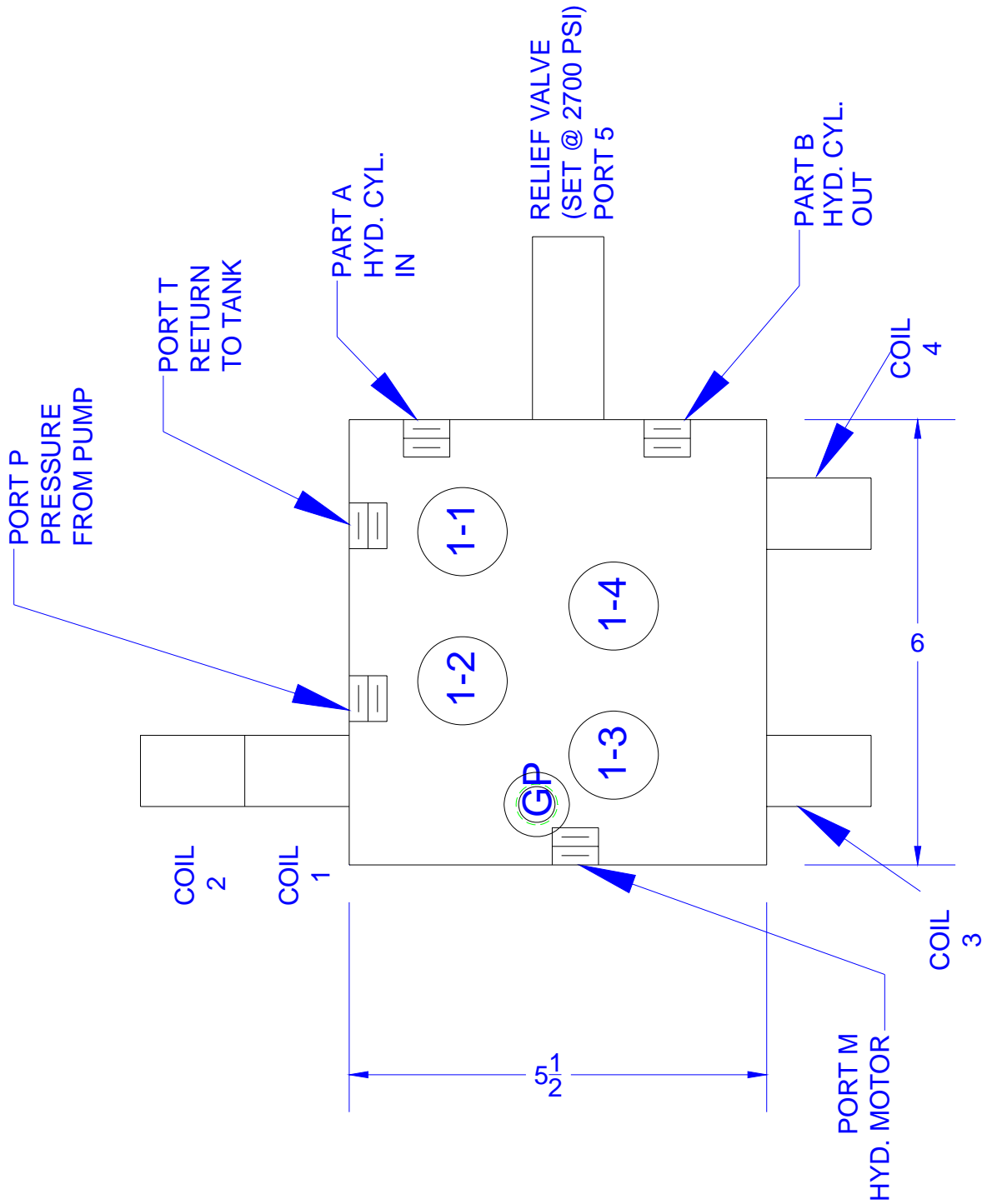


TRAILER PLUG ASSEMBLY

WIRE TRAILER SOCKET WITH FLAP COVER TO MAINFOLD WITH 2 FT. CABLE
 WIRE TRAILER PLUG TO CONTROL BOX WITH 10 FT. CABLE

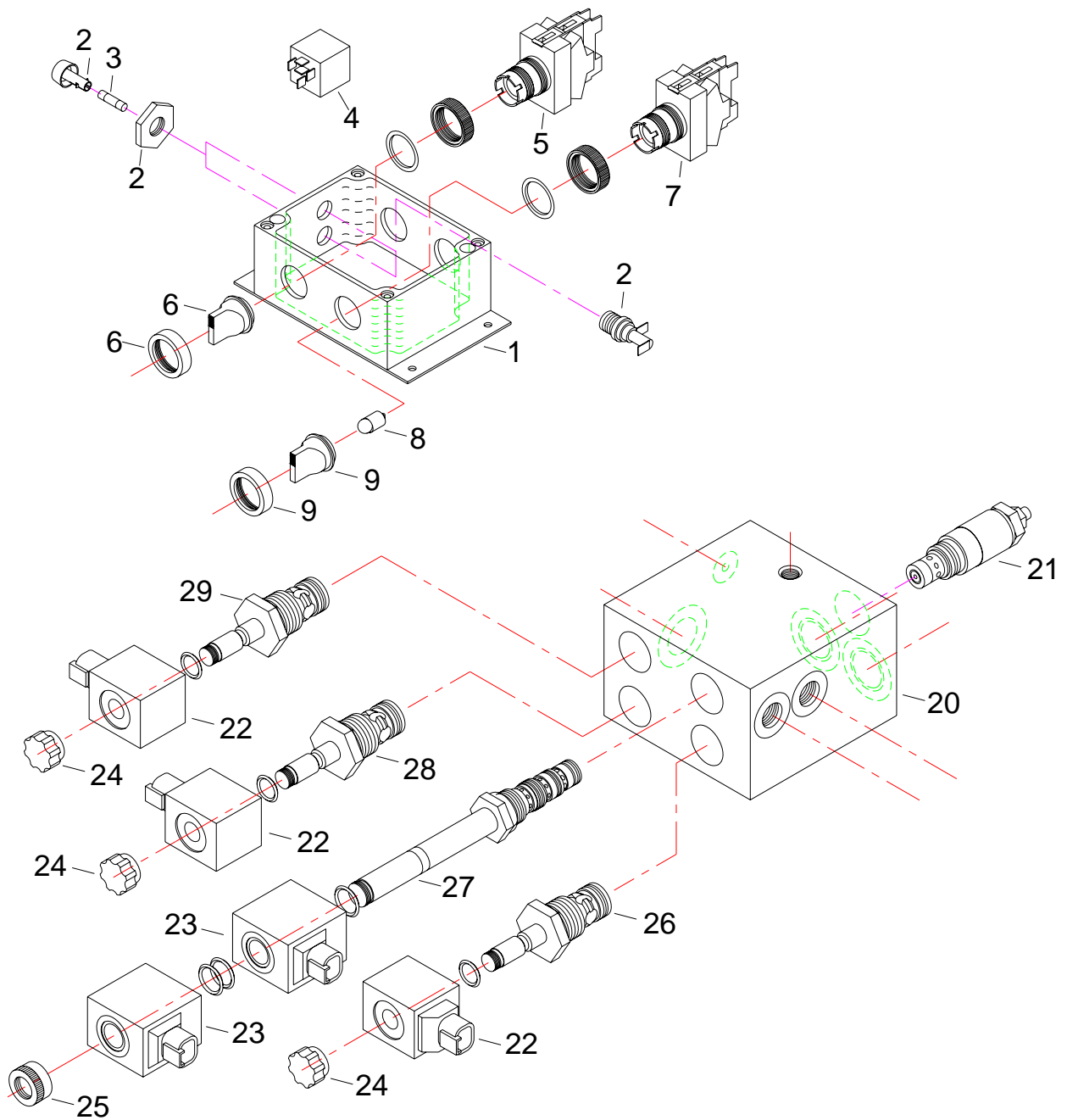
EATON CONTROL VALVE PORT CONNECTIONS

UP TO SERIAL # WR-261



REXROTH ELECTRIC CONTROL VALVE

SERIAL # WR-261 UP TO SERIAL #WR279



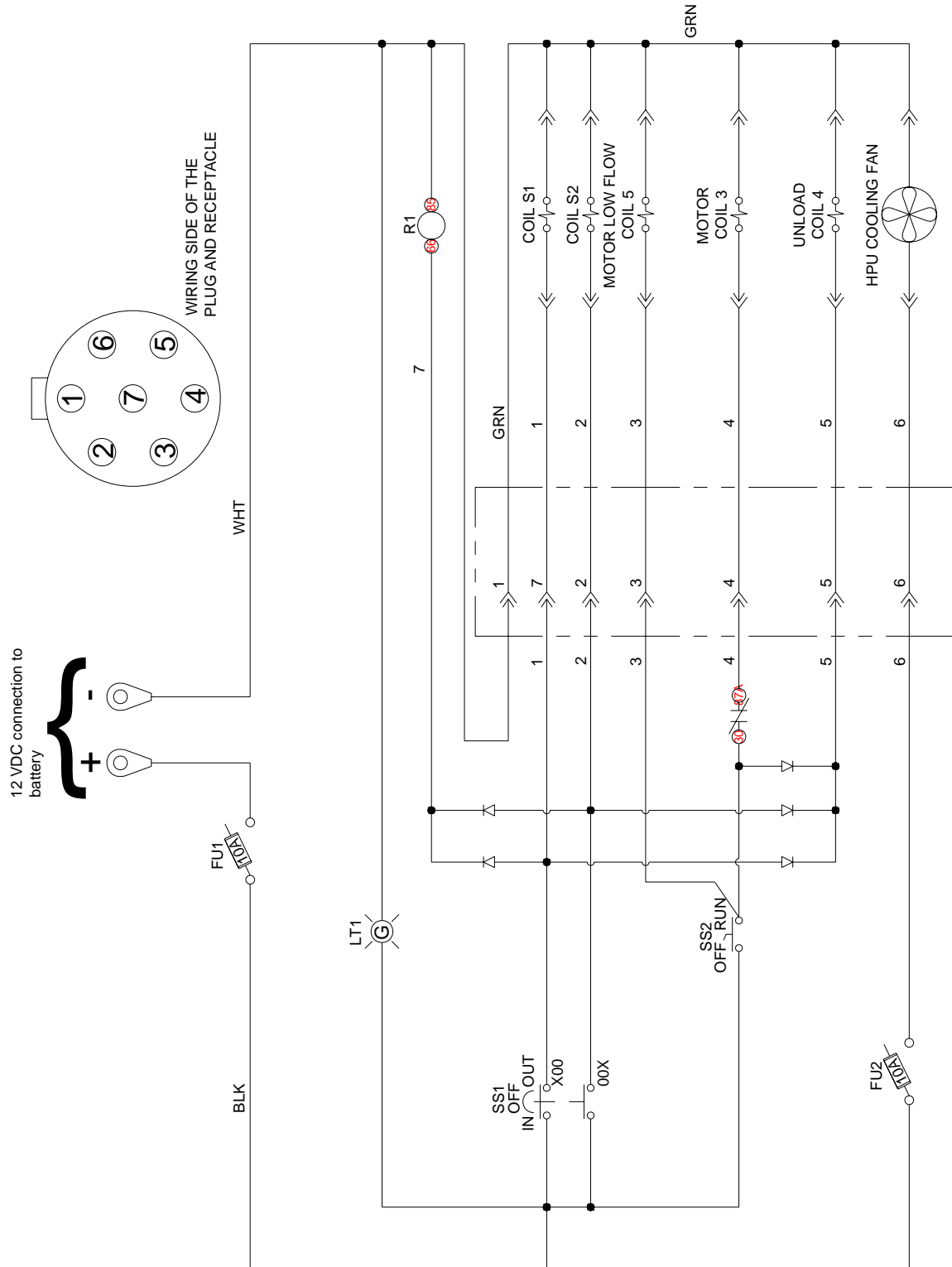
REXROTH ELECTRIC CONTROL VALVE

SERIAL # WR-261 UP TO SERIAL #WR279

1	WR-601931	Spool Control Box Complete
2	WR-601932	Fuse Holder
3	WR-601933	Fuse 10A
4	DB-400151	Relay
5	WR-601935	3 pos Selector Switch
6	WR-601936	Red Knob
7	WR-601937	2 Pos Illuminated Switch
8	WR-601939	Bulb
9	WR-601938	Green Knob
20	WR-601940	Electric Control Valve Block with Valves
21	WR-601941	Relief Valve
22	WR-601942	12VDC Coil w/Connector
23	WR-601947	12VDC Coil w/Connector
24		Nut (Not Sold Separately)
25		Nut (Not Sold Separately)
26	WR-601943	Solenoid Valve
27	WR-601948	Solenoid Valve
28	WR-601944	Solenoid Valve
29	WR-601945	Solenoid Valve

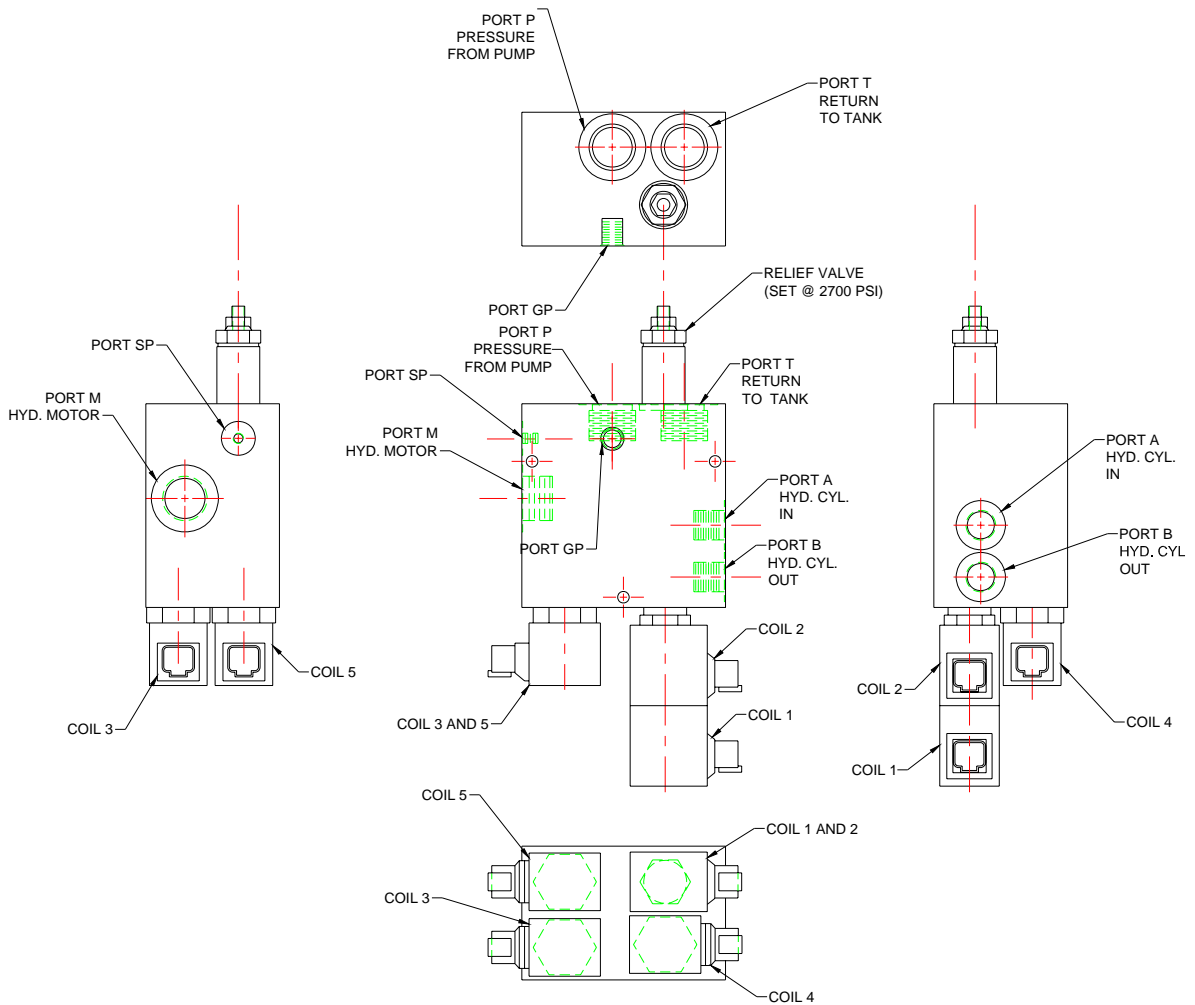
REXROTH ELECTRICAL SCHEMATIC

SERIAL # WR-261 UP TO SERIAL #WR279



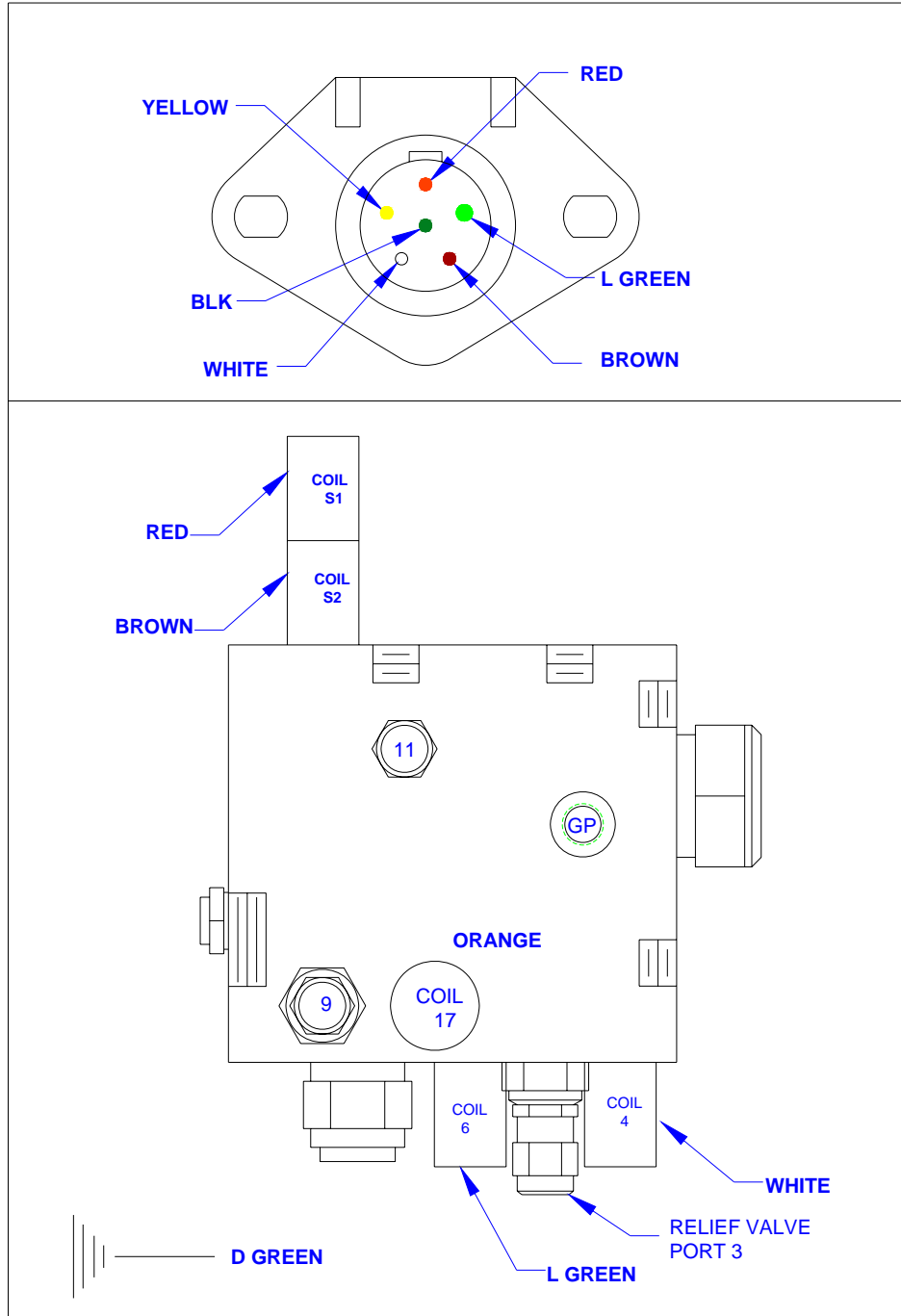
REXROTH CONTROL VALVE PORT CONNECTIONS

SERIAL # WR-261 UP TO SERIAL #WR279



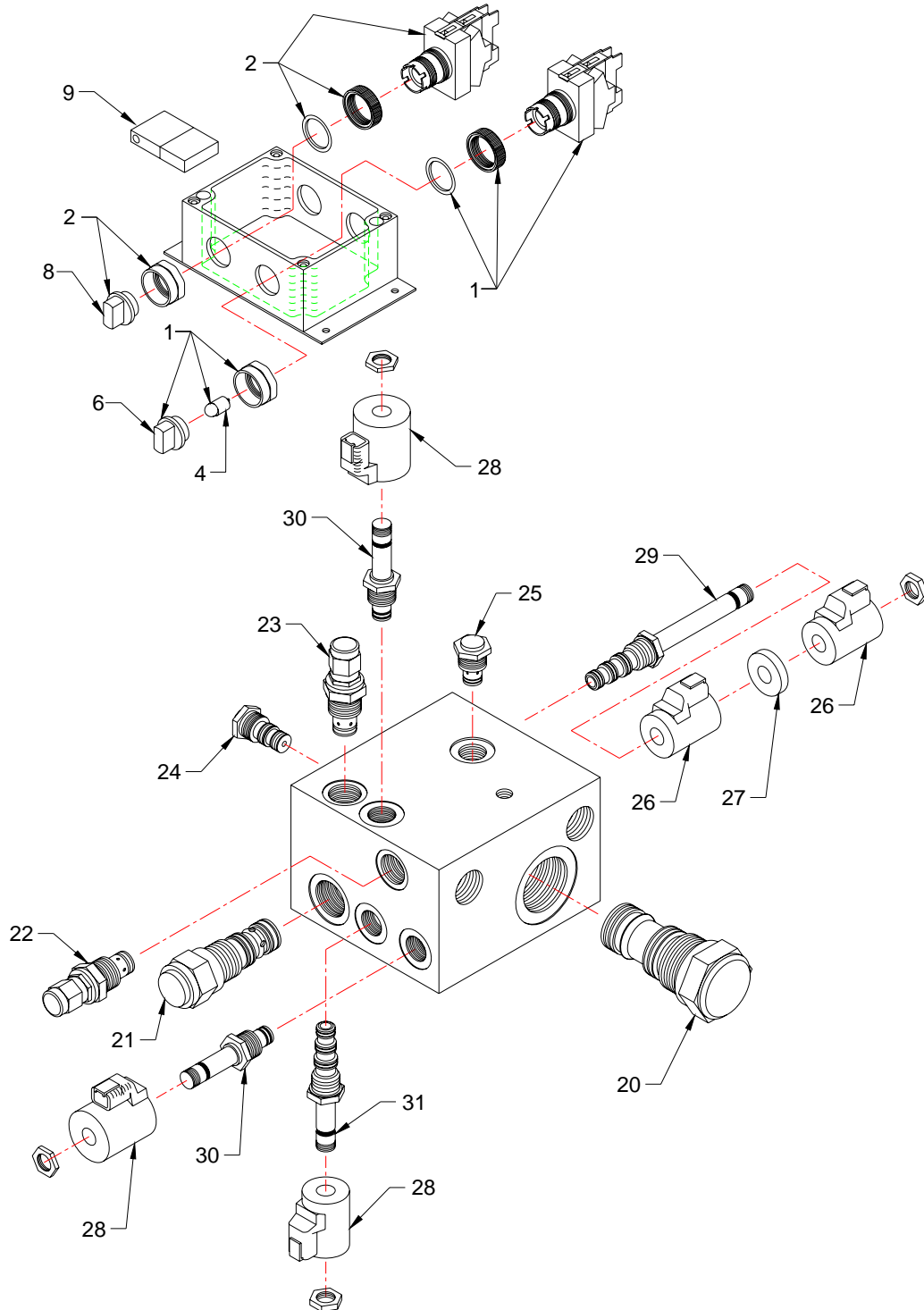
EATON NEW ELECTRIC PLUG DIAGRAM

FROM SERIAL # WR279



EATON NEW ELECTRIC CONTROL VALVE

FROM SERIAL # WR279



EATON NEW ELECTRIC CONTROL VALVE

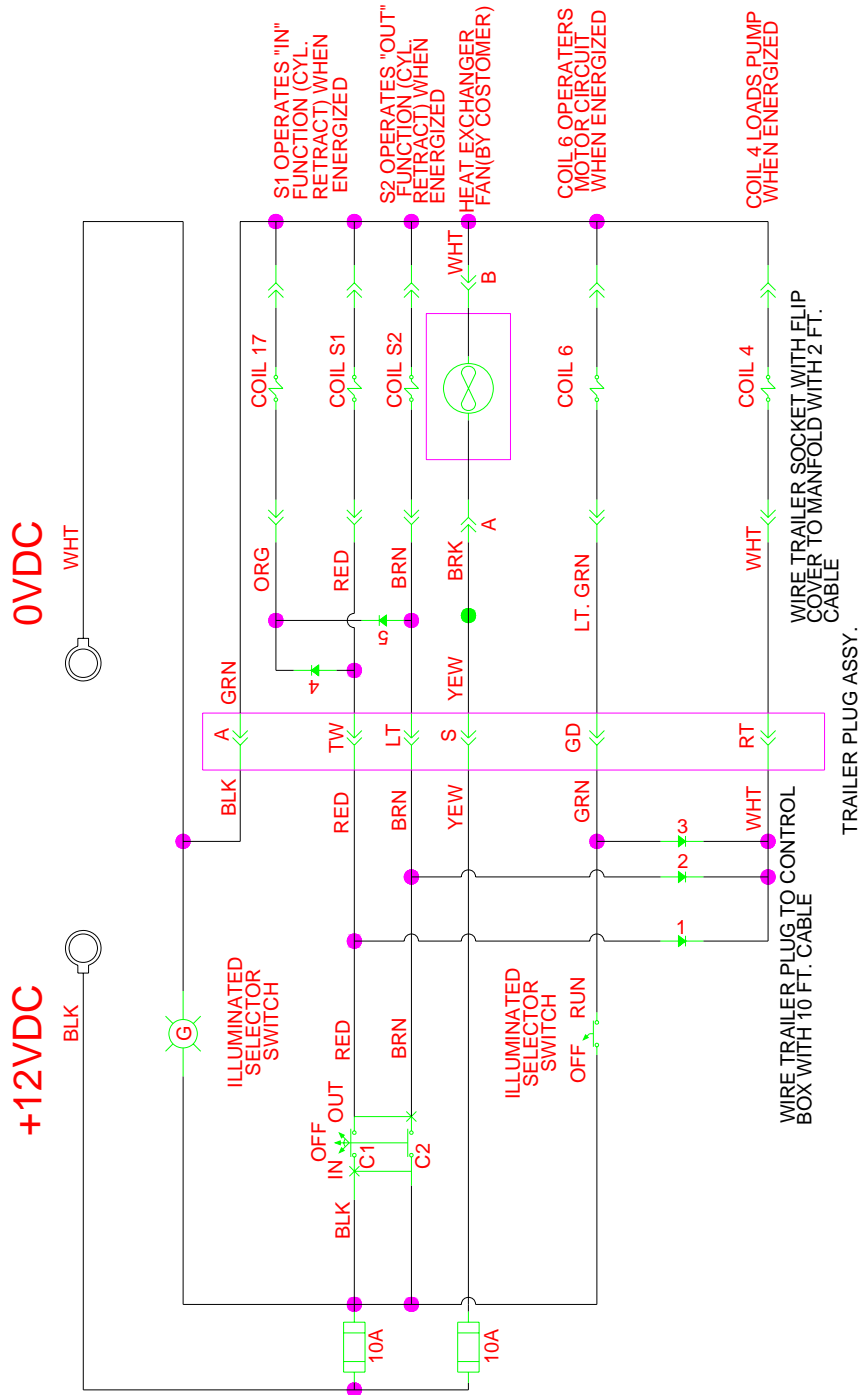
FROM SERIAL #WR279

1	DB-400148	2Pos.Illum. Selector Switch
2	DB-400149	3 Pos. Selector Switch
4	HK-101813	Bulb
6	HK-101811	Green Knob
8	DB-400150	Black Knob
9	WR-600017	Fuse Holder (10A FUSE)
20	WR-600153	Logic Element
21	WR-600154	Logic Element
22	WR-600155	Relief Valve
23	WR-600156	Relief Valve
24	WR-600157	Shuttle Valve
25	WR-600158	Flow Regulator
26	DB-400161	12VDC Coil w/Connector
27	DB-400156	Spacer
28	DB-400160	12VDC Coil w/Connector
29	WR-600159	Solenoid Valve
30	WR-600160	Solenoid Valve
31	WR-600161	Solenoid Valve

EATON NEW VALVE ELECTRICAL

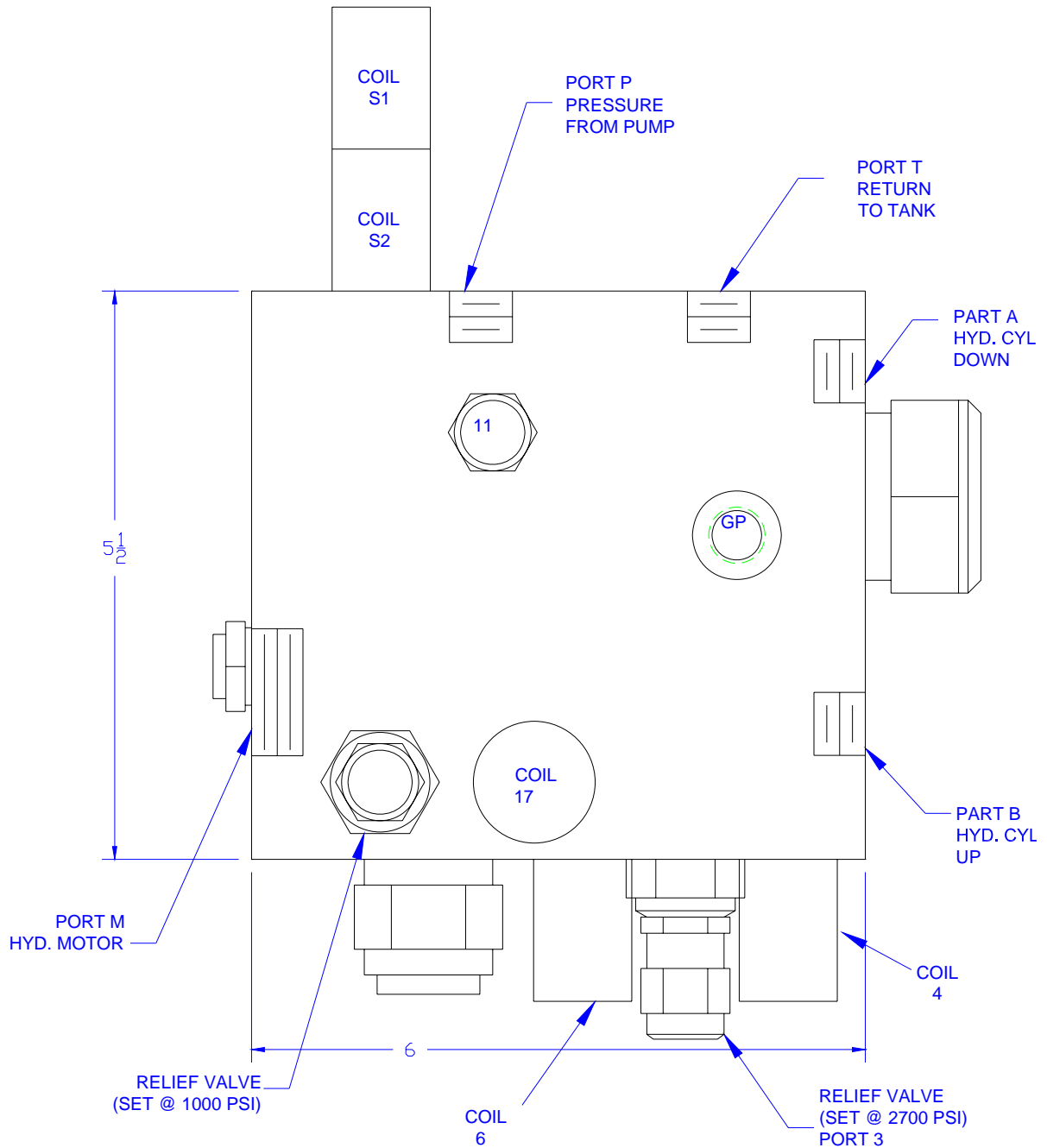
SCHEMATIC

FROM SERIAL # WR279



EATON NEW CONTROL VALVE PORT CONNECTIONS

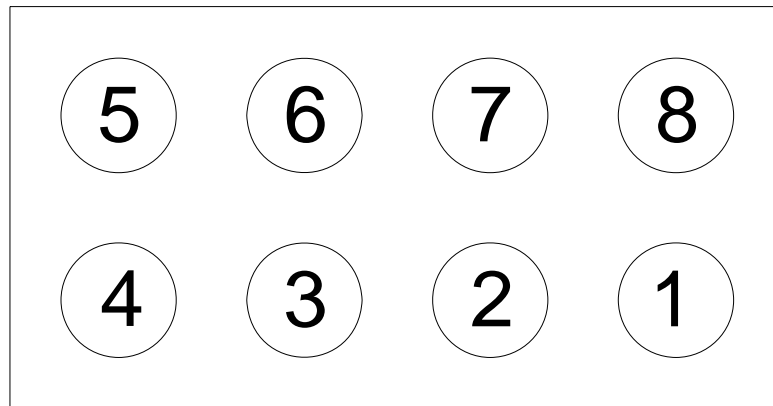
FROM SERIAL #WR279



DEUTCH CONNECTOR GUIDE

SERIAL # 207 UP

WINDROWER



1 - RED

5 - YELLOW

2 - BROWN

6 - GREEN

3 - BLANK

7 - BLACK

4 - WHITE

8 - BLANK

DECAL



PART # HK-101852, WARNING DECAL, FIT HYDRAULIC TONGUE



PART # HK-100906, CAUTION DECAL



PART # HK-100908, WARNING DECAL

DECAL



PART # HK-100916, DANGER DECAL



PART # HK-100899, CAUTION DECAL

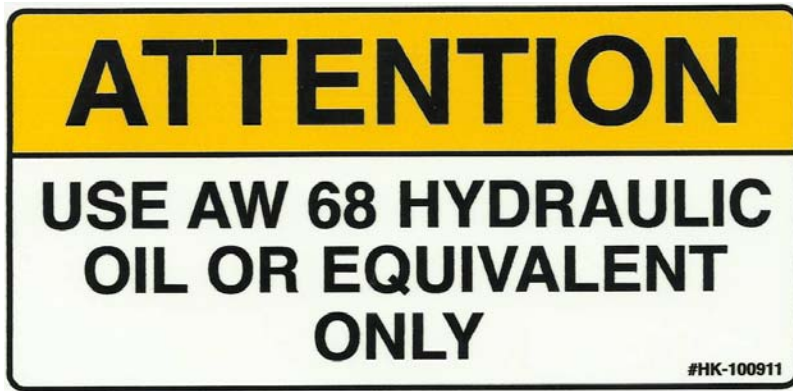


PART # HK-100918, WARNING DECAL

DECAL



PART # HK-100910, ATTENTION DECAL



PART # HK-100911, ATTENTION DECAL



PART # HK-100907, CAUTION DECAL

DECAL



PART # HK-100912, WARNING DECAL



PART # HK-100919, DANGER DECAL

DECAL



PART # WR-600095, SLOW MOVING DECAL

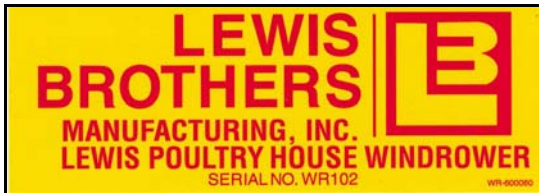


PART # HK-100922, LEWIS BROTHERS DECAL



PART # WR-600061, DANGER DECAL

DECAL



PART # WR-600060, WINDROWER DECAL



PART # DB-400166, GREASE DECAL, FIT MACHINE WINDROWER

PATENT PENDING

PART # HK-100909, PATENT PENDING DECAL



PART # WR-600063, WARNING DECAL FIT MACHINE WR-1