

Lewis Brothers Mfg.
Model # WB-1 Wall Blade
Parts Book



Manufactured by **LEWIS BROTHERS MANUFACTURING, INC.**

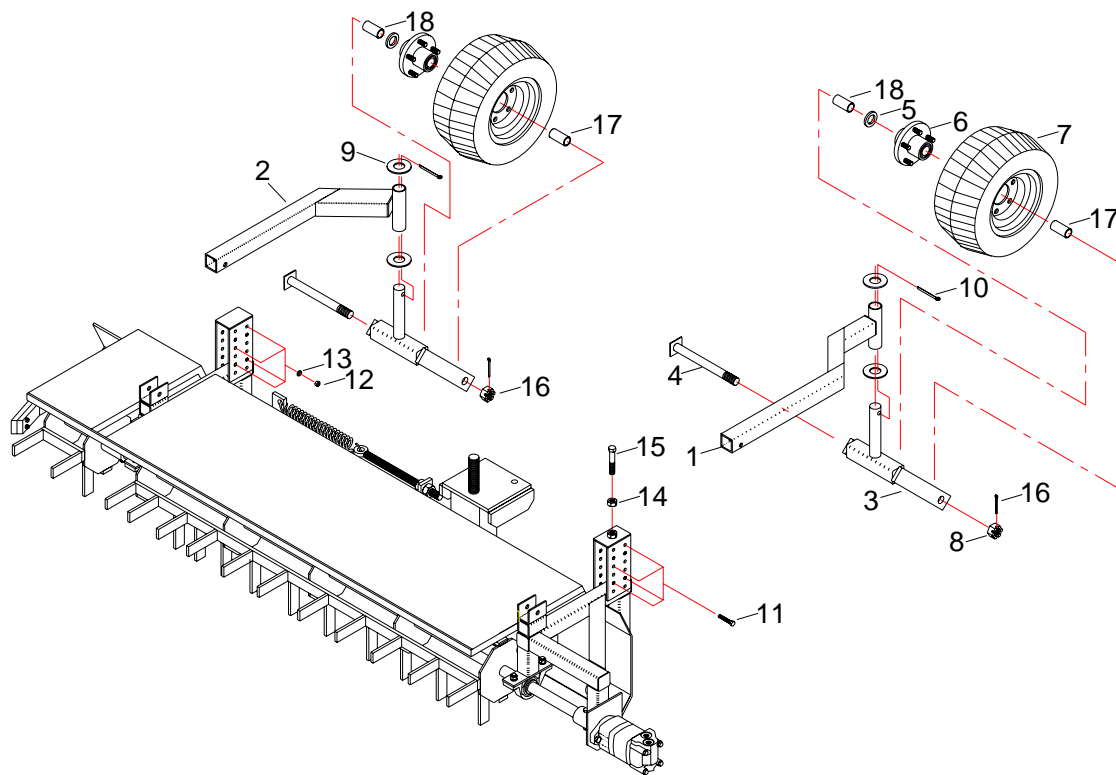
Post Office Box 146
Baxley, GA. 31513
Phone: (912) 367-4651
Fax: (912)-367-3958

WB-10000-0

Table of Contents

Wheel Assembly	3
Tongue Assembly and Front Deflector	4
Cylinder Assembly	5
Hydraulic Kit	6
Post Jumper Assembly	8
Outside Roller Mount	9
Inside Roller mount	10
Hub Assembly	11
Hydraulic Motor # WB-100070	12
Flow Control Valve	14
Pump and Torque Arm	16
Pump # HK-100718	17
Decal	19, 22

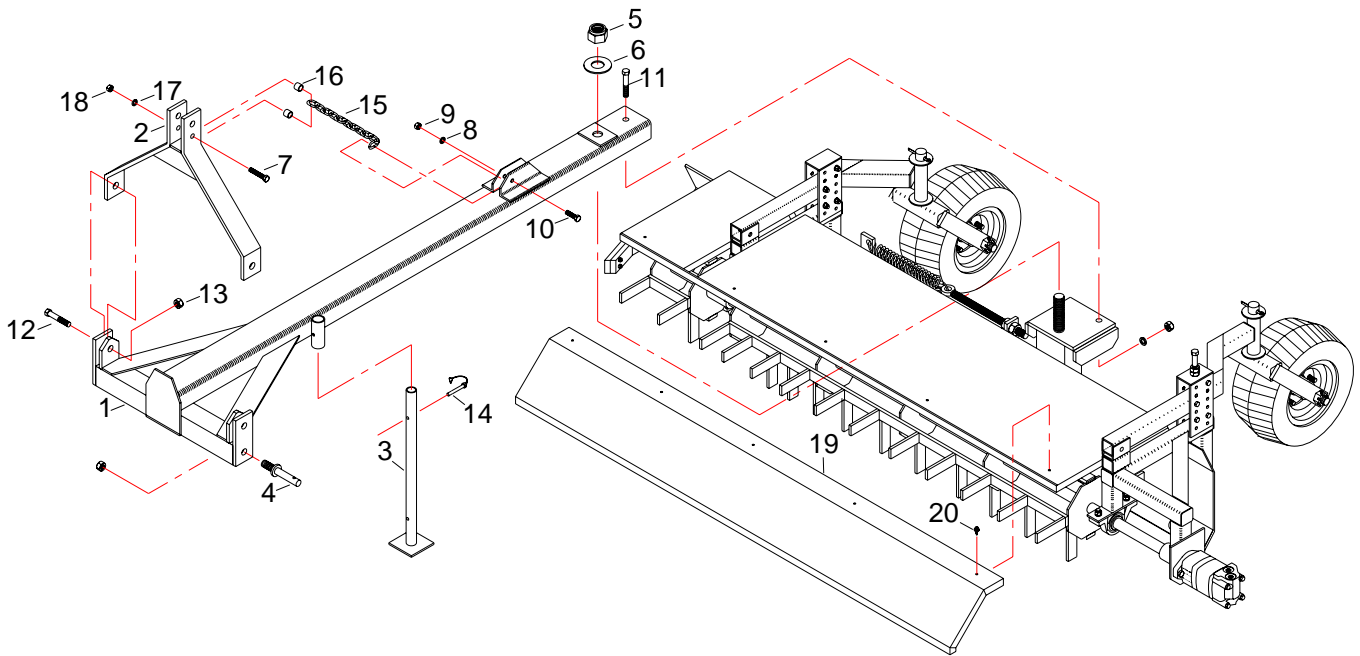
Wheel Assembly



1	WB-100112	L.H. Gauge Wheel Leg
2	WB-100104	R.H. Gauge Wheel Leg
3	WB-100095	Fork
4	WB-100127	Spindle
5	WB-100002	Wheel Seal
6	WB-100001	Hub/W Bearing & Seal (See Page 11)
7	WB-100006	Tire & Wheel Assembly
8	HW-300221SJ	Nut
9	HW-325224Z	Washer, Flat, 1-1/4
10	HW-427116	Pin, Cotter, ZP, 1/4 x 2-1/2
11	HW-204120G5Z	Bolt, HH, ZP, 3/8-16NC x 3
12	HW-300204ZG5	Nut, Hex, ZP, 3/8-16NC
13	HW-335204Z	Washer, Lock, ZP, 3/8
14	HW-300212ZG5	Nut, Hex, ZP, 5/8-11NC
15	HW-212136G5ZF	Bolt, HH, ZP, 5/8-11NC x 5 GR5
16	HW-425112	Pin, Cotter, 5/32 x 2
17	WB-100132	Spacer, Wheel Bearing (Nut Side)
18	WB-100131	Spacer, Wheel Bearing (Lock Side)

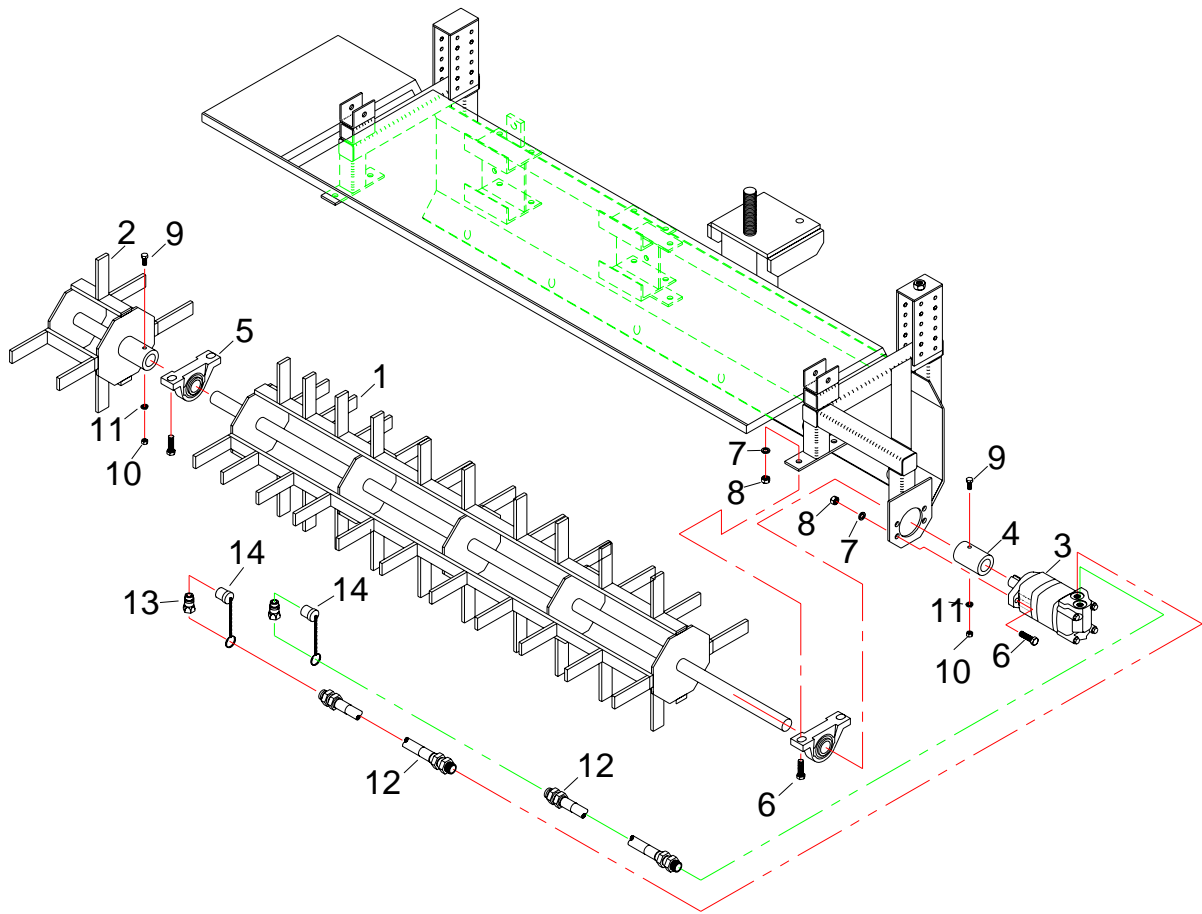
Orientation: Standing behind Machine Looking Straight Ahead.

Tongue Assembly and Front Deflector



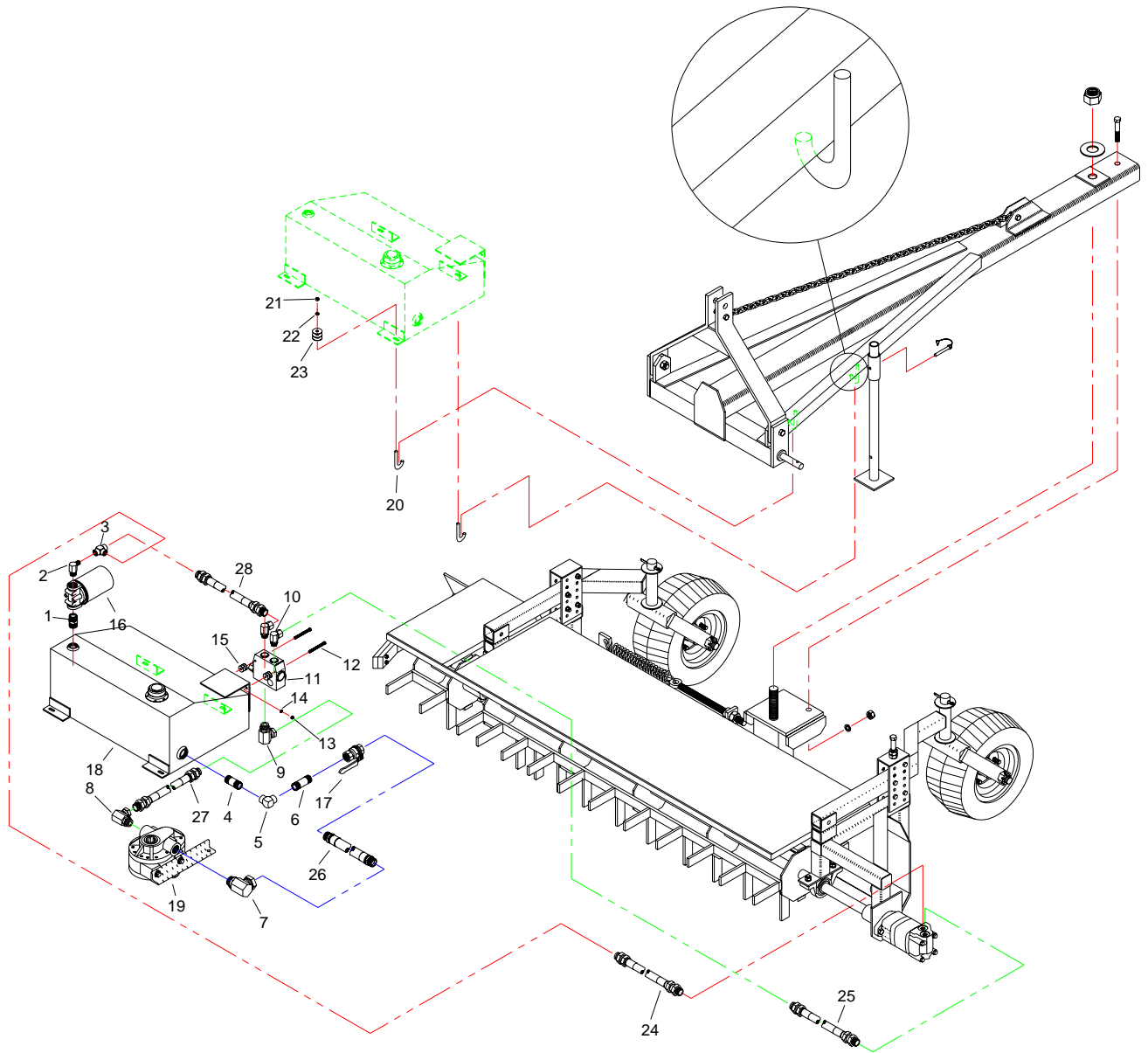
1	WB-100135	Tongue
2	WB-100175	Third Link Weldment
3	WB-100136	Stand
4	WB-100156	Lift Arm Pin
5	HW-301229NEZ	Locknut, Nylon, 1-1/2-6NC
6	HW-325228Z	Washer, Flat, 1-1/2
7	HW-210128G8C	Bolt, HH, ZP, 9/16-12NC x 4 GR8
8	HW-335208Z	Washer, Lock, 1/2 ZP
9	HW-300208ZG5	Nut, Hex, ZP, 1/2-13NC
10	HW-208108G5Z	Bolt, HH, ZP, 1/2-13NC x 1-1/2
11	HW-212136G5Z	Bolt, HH, ZP, 5/8-11NC x 5 (SHEAR BOLT)
12	HW-218120G8Z	Bolt, HH, ZP, 7/8-9NC x 3
13	HW-301218NEZ	Locknut, Hex, ZP, 7/8-9NC
14	HW-960851	Lock Pin
15	WB-100149	Chain (51 Links)
16	WB-100186	Chain Spacer
17	HW-335210Z	Washer, Lock, ZP, 9/16
18	HW-300210ZG5	Nut, Hex, 9/16-12NC
19	WB-100220	Deflector
20	Hw-100160	Screw, HH w/ Sealing Washer, Self Drilling #12 x 1" lg

Cylinder Assembly



1	WB-100115	Main Cylinder
2	WB-100120	Cylinder Extension
3	WB-100070	Hydraulic Motor (See Page 12)
4	WB-100053	Coupling, Motor to Shaft
5	HK-100429	Bearing
6	HW-208112G5Z	Bolt, HH, ZP, 1/2-13NC x 2
7	HW-335208Z	Washer, Lock, 1/2 ZP
8	HW-300208ZG5	Nut, Hex, 1/2-13NC, ZP
9	HW-204118G5Z	Bolt, HH, ZP, 3/8-16NC x 2-3/4
10	HW-300204ZG5	Nut, Hex, ZP, 3/8-16NC
11	HW-335204Z	Washer, Lock, 3/8 ZP
12	WB-100148	Hose, 1/2" ID x 165" LG
13	HK-100965	Quick Coupler
14	HK-100993	Quick Coupler Cap

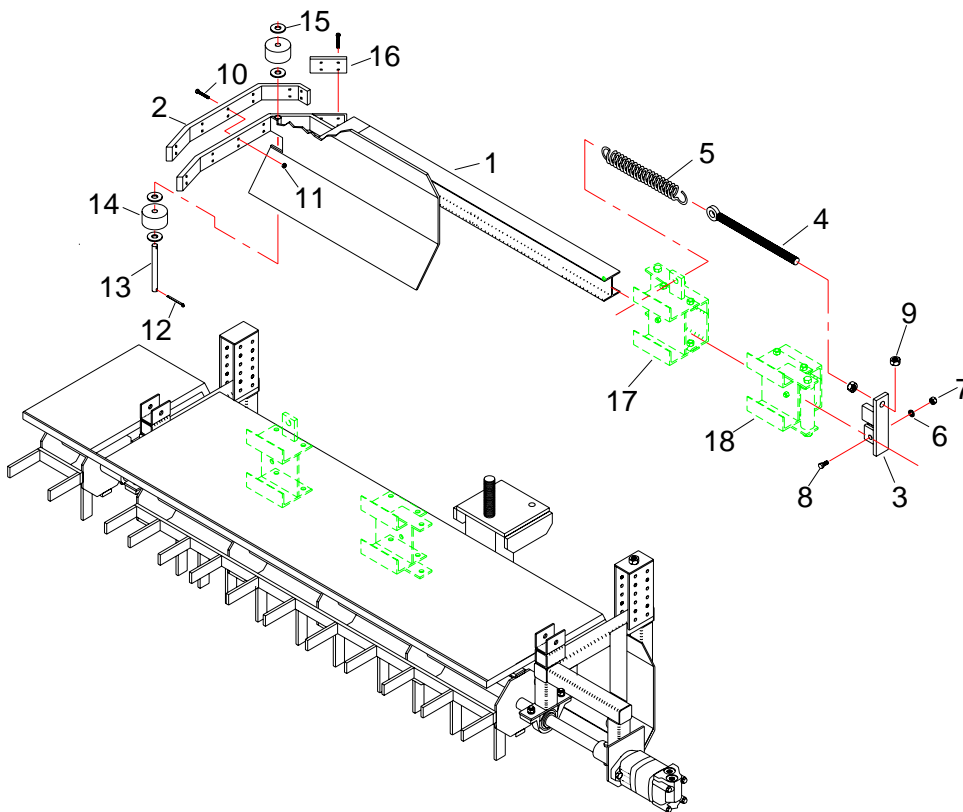
Hydraulic Kit



Hydraulic Kit

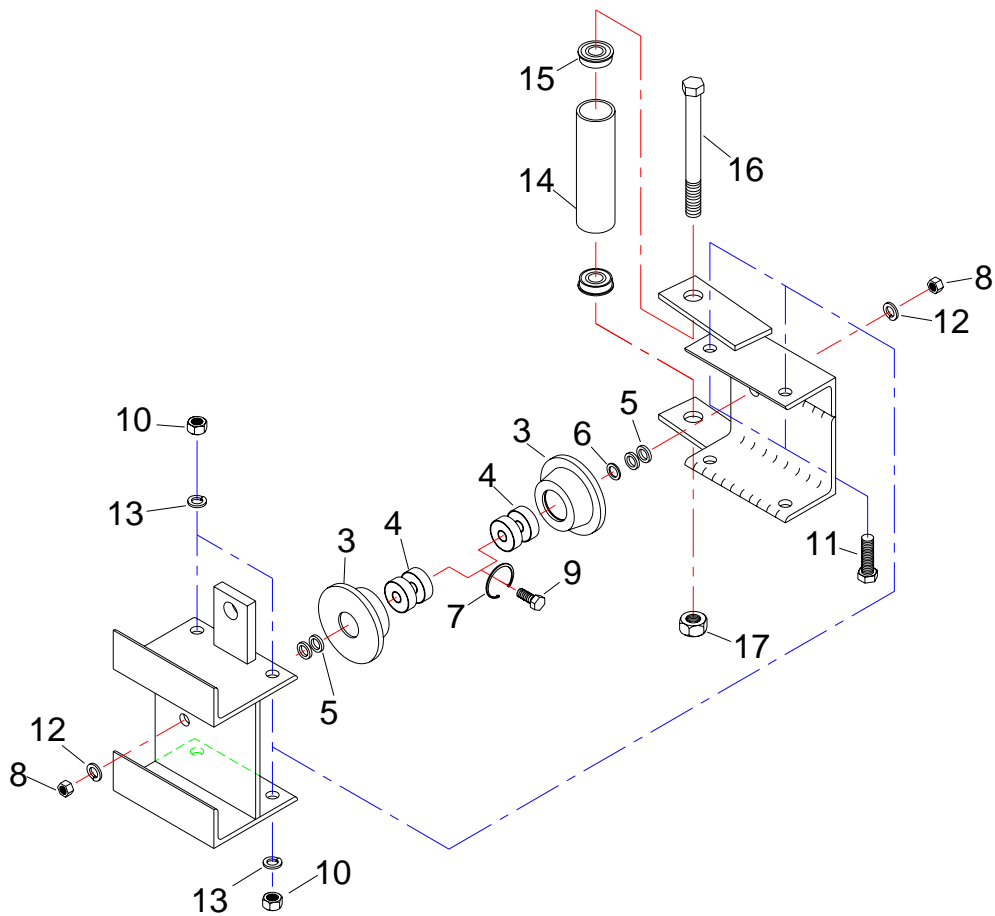
1	HK-100772	Nipple, 3/4" MP x 3/4" MP
2	WB-100210	Elbow, 90° 8 MP x 12 MP
3	HK-100976	Tee, 8 MP x 8 MP x 8 MP
4	WB-100199	Nipple Steel, 1" MP x 1" MP 2-1/2" LG
5	WB-100198	Elbow, 90° 1" FP x 1" FP
6	WB-100209	Nipple Steel, 1" MP x 1" MP 3" LG
7	WB-100211	Elbow 90° 16 ORB x 16 FPX
8	HK-100969	Elbow 90° 12 ORB x 12 FPX
9	WB-100212	Elbow 90° 8 ORB x 12 FPX
10	HK-100970	Elbow 90° 8 ORB x 8 FPX
11	WB-100194	Flow Control Valve (See Page 14)
12	HW-200120G5Z	Bolt, 1/4-20NC x 3, GR5
13	HW-300200ZG5	Nut, Hex, 1/4-20NC
14	HW-335200Z	Washer, Lock, ZP, 1/4"
15	HW-325200Z	Washer, Flat, ZP, 1/4"
16	HK-100722	Filter Assembly (HK-100721 Replacement Filter Only)
17	H109	Ball Valve 1"
18	WB-100207	Tank Weldment
19	HK-101331	Pump/Torque Arm Kit (See Page 16)
20	HW-960050	3/8-16NC x 3", J-Bolt
21	HW-300204ZG5	Nut, Hex, 3/8-16NC
22	HW-335204Z	Washer, Lock, ZP, 3/8"
23	HW-325204Z	Washer, Flat, ZP, 3/8"
24	WB-100148	Hose, 1/2" ID x 165" LG
25	WB-100148	Hose, 1/2" ID x 165" LG
26	WB-100201	Hose, Suction, Tank To Pump
27	WB-100213	Hose, Pump to Flow Control Valve
28	HK-101391	Hose, Flow Control Valve To Return (Tank)

Post Jumper Assembly



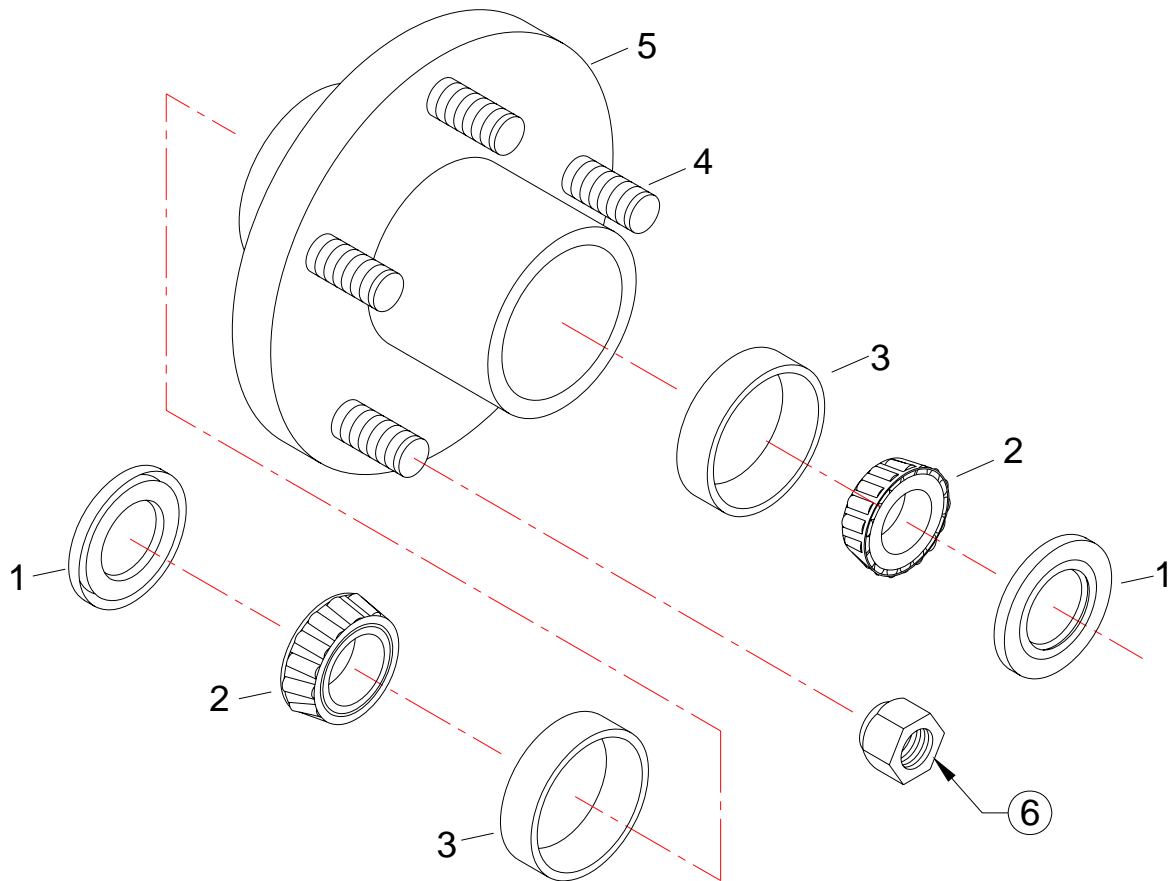
1	WB-100014	Post Jumper
2	WB-100057	Post Slide Bushing
3	WB-100152	Spring Arm Mount
4	WB-100064	Spring Adjustment Rod
5	WB-100050	Spring, Post Jumper Return
6	HW-335208Z	Washer, Lock, 1/2 ZP
7	HW-300208ZG5	Nut, Hex, ZP, 1/2-13NC
8	HW-208108G5Z	Bolt, HH, ZP, 1/2-13NC x 1-1/2
9	HW-300212ZG5	Nut, Hex, ZP, 5/8-11NC
10	HW-798104Z	Bolt, Crg, ZP, 3/16-24 x 1
11	HW-301200NMZ	Locknut, Nylon, 10-24
12	HW-425112	Pin, Cotter (5/32 x 2)
13	WB-100154	Roller Axle
14	WB-100159	Post Slide Roller
15	HW-325212Z	Washer, Flat, ZP, 5/8
16	WB-100218	Post Saver
17	See Page 9	Outside Roller Mount
18	See Page 10	Inside Roller Mount
19	WB-100221	Post jumper kit (items 1,2,10,11,12,13,14,15,16)

Outside Roller Mount



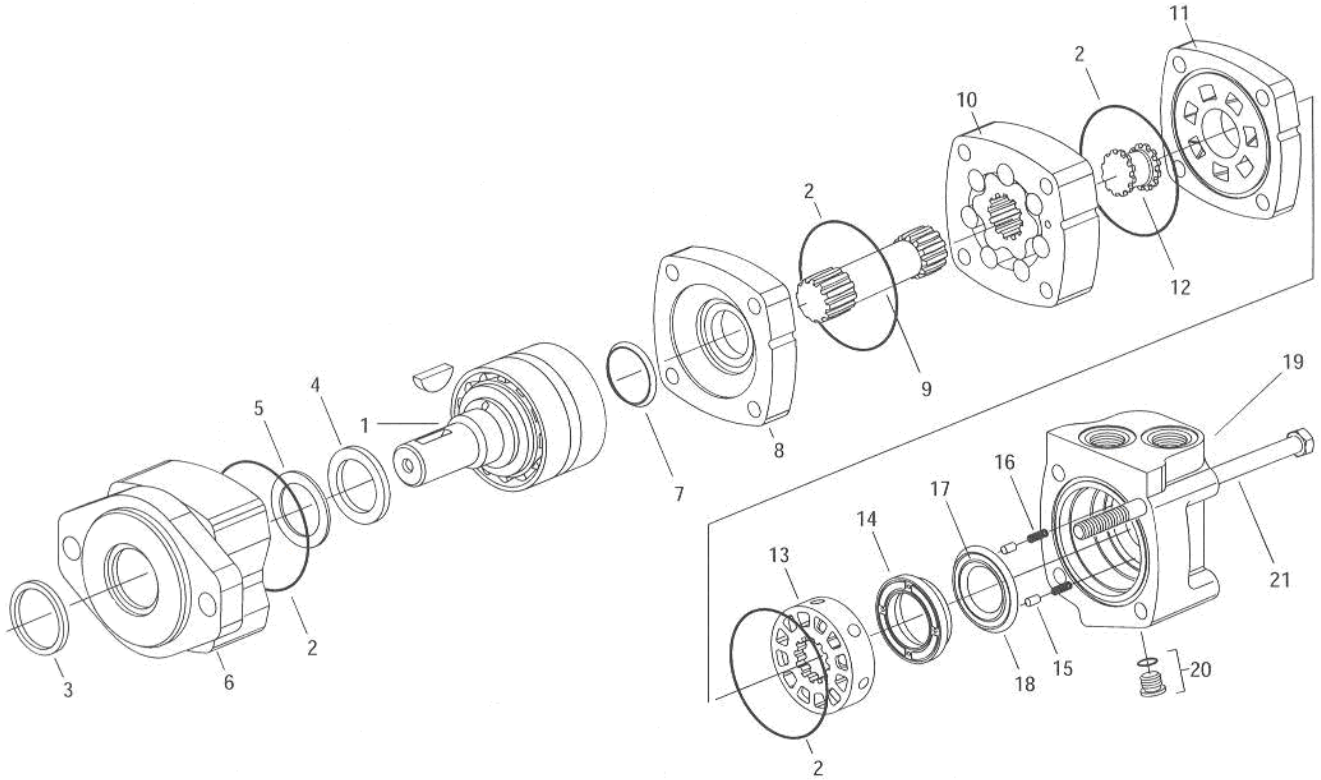
3	WB-100040	Taper Roller
4	WB-100036	Taper Roller Bearing
5	HW-960245	.125 Shim
6	HW-960250	.062 Shim
7	HW-960120	Snap Ring
8	HW-960425	Nut, Hex, 12MM-1.75
9	HW-960325	Bolt, ZP, 12MM-1.75 x 2-1/4, GA8.8
10	HW-300208ZG5	Nut, Hex, 1/2-13NC, ZP
11	HW-208106G5Z	Bolt, ZP, 1/2-13NC x 1-1/4
12	HW-960525	Washer, Lock, 12MM
13	HW-335208Z	Washer, Lock, ZP, 1/2
14	WB-100041	Outside Backlash Roller
15	WB-100043	Bearing, Backlash Roller
16	HW-212160G5Z	Bolt, HH, 5/8-11NC x 8
17	HW-301212NEZ	Nut, Lock, Nylon, 5/8-11NC

Hub Assembly



1	WB-100002	Seal
2	FGB105	Bearing, Cone
3	FGB104	Bearing, Cup
4	N/A	Stud 1/2-20NF
5		Hub Not Sold Separately
6	N/A	Wheel Nut 1/2-20NF

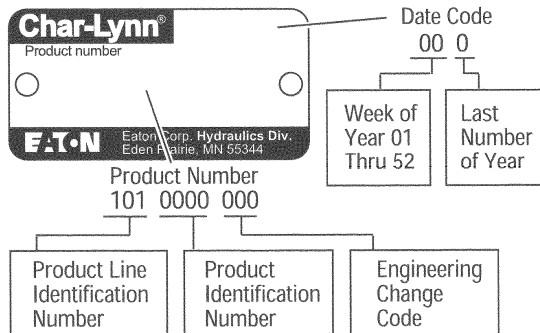
Hydraulic Motor # WB-100070



How to Order Replacement Parts

Each Order Must Include the Following:

1. Product Number
2. Date Code
3. Part Name
4. Part Number
5. Quantity of Parts

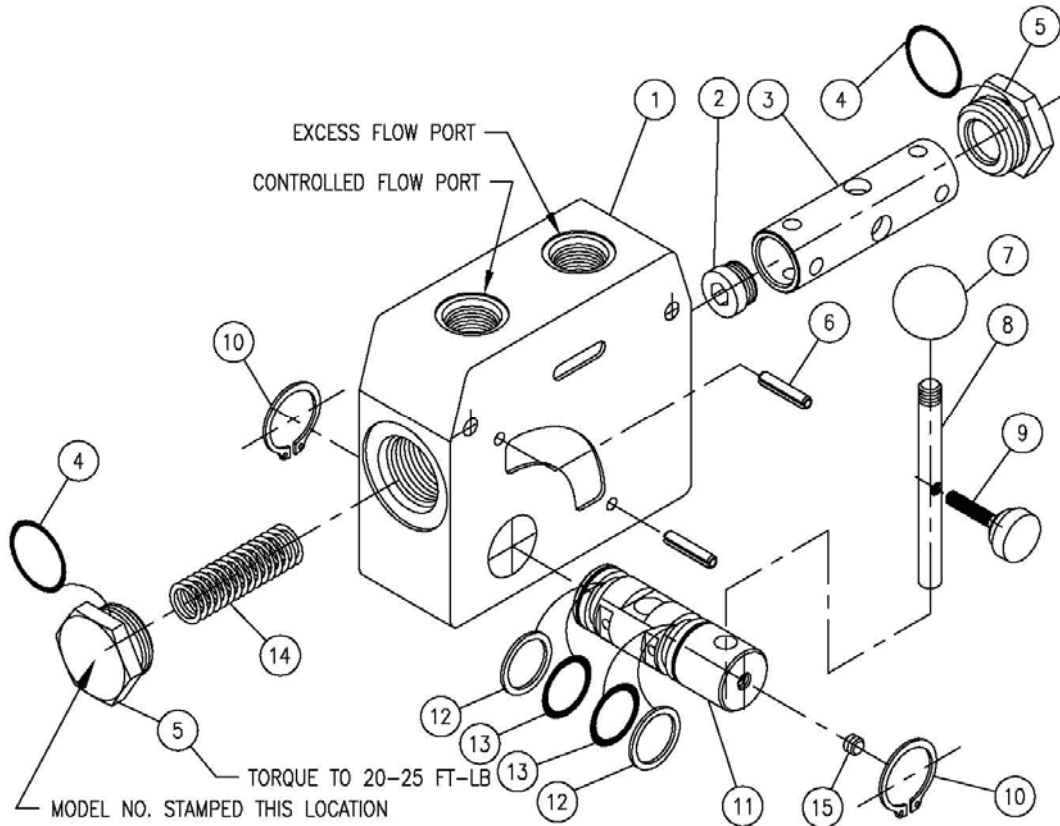


Hydraulic Motor # WB-100070

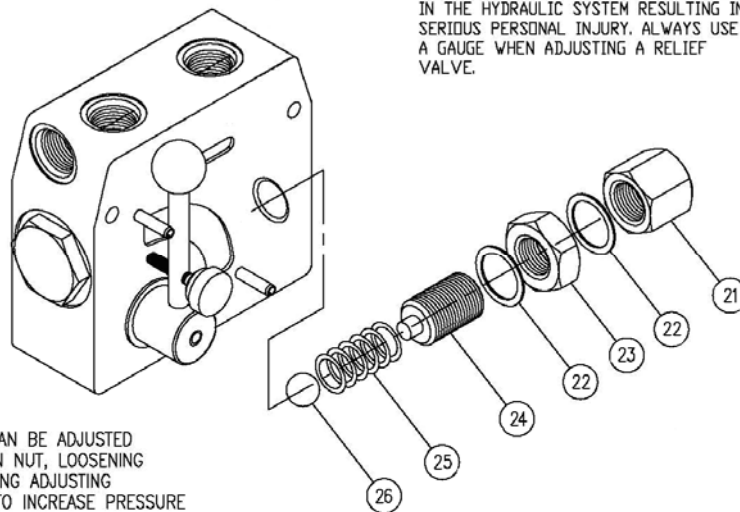
	1	21618-002	Shaft and Bearing Kit	1
		14392-008	Key	1
*	2		Seal (Not Sold Separately)	4
*	3	9121-001	Seal Exclusion	1
*	4	9057-009	Seal,	1
*	5	7382	Ring, Back-up	1
	6	21578-004	Housing, Bearing	1
*	7		Seal, Shaft Face (Not Sold Separately)	1
	8	22102-000	Plate, Wear	1
	9	21371-005	Drive, Main	1
	10	21625-005	Geroler	1
	11	22134-000	Plate Valve	1
	12	8433-000	Drive, Valve	1
	13	21466-000	Valve	1
	14	8915-000	Balance Ring	1
	15	14351-000	Pin, Balance Ring	2
	16	7383-000	Spring, Compression	2
*	17		Seal, Face, Inner (Not Sold Separately)	1
*	18		Seal, Face, Outer (Not Sold Separately)	1
	19	21564-001	Housing, Valve	1
	20	9072-003	Plug Assembly	1
*			O-ring (Not Sold Separately)	1
	21	14384-004	Screw, Cap	4
		61258-000	Seal, Kit (Contains Parts Indicated by *)	

NOTE: PLEASE SEE PAGE 21 FOR PARTS ORDERING INFORMATION.

Flow Control Valve



WARNING: OVERPRESSURE MAY CAUSE SUDDEN AND UNEXPECTED FAILURE OF A COMPONENT IN THE HYDRAULIC SYSTEM RESULTING IN SERIOUS PERSONAL INJURY. ALWAYS USE A GAUGE WHEN ADJUSTING A RELIEF VALVE.



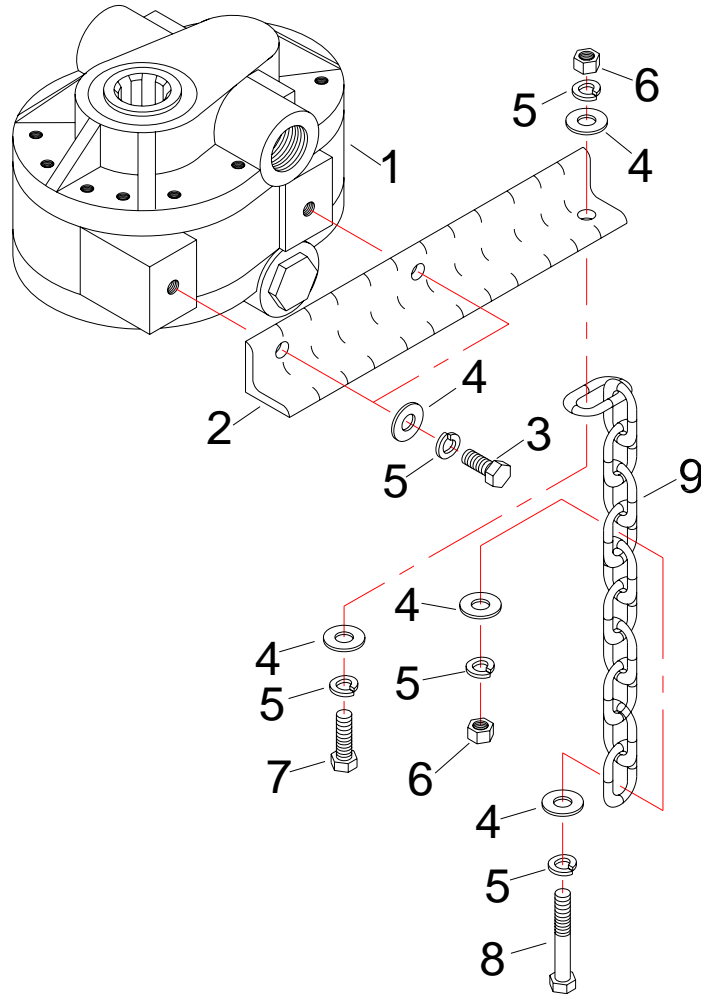
RELIEF PRESSURE CAN BE ADJUSTED BY REMOVING ACORN NUT, LOOSENING JAM NUT AND TURNING ADJUSTING SCREW CLOCKWISE TO INCREASE PRESSURE AND COUNTERCLOCKWISE TO DECREASE PRESSURE. RELIEF ADJUSTABLE FROM 1000 PSI TO 2500 PSI.

Flow Control Valve

1	N/A	Valve Body	1
2	N/A	Plug	1
3	N/A	Metering Spool	1
4		912 O-Ring	2
5	N/A	Main Bore Plug	2
6		Roll Pin	2
7		Handle Knob	1
8		Handle	1
9		Thumb Screw	1
10	N/A	Snap Ring	2
11	N/A	Rotary Spool	1
12		Back-Up Washer (See Note 1)	2
13		116 O-Ring (See Note 1)	2
14	N/A	Metering Spring	1
15	N/A	Set Screw	1
21	N/A	Scorn Nut	1
22	N/A	Washer	2
23	N/A	Jam Nut	1
24	N/A	Adjusting Screw	1
25	N/A	Spring	1
26	N/A	Steel Ball	1
	RDK1005	Seal Kit Includes Items 4,12, and13	
	H1071	Handle Kit Includes Items 6,7,8, and 9	

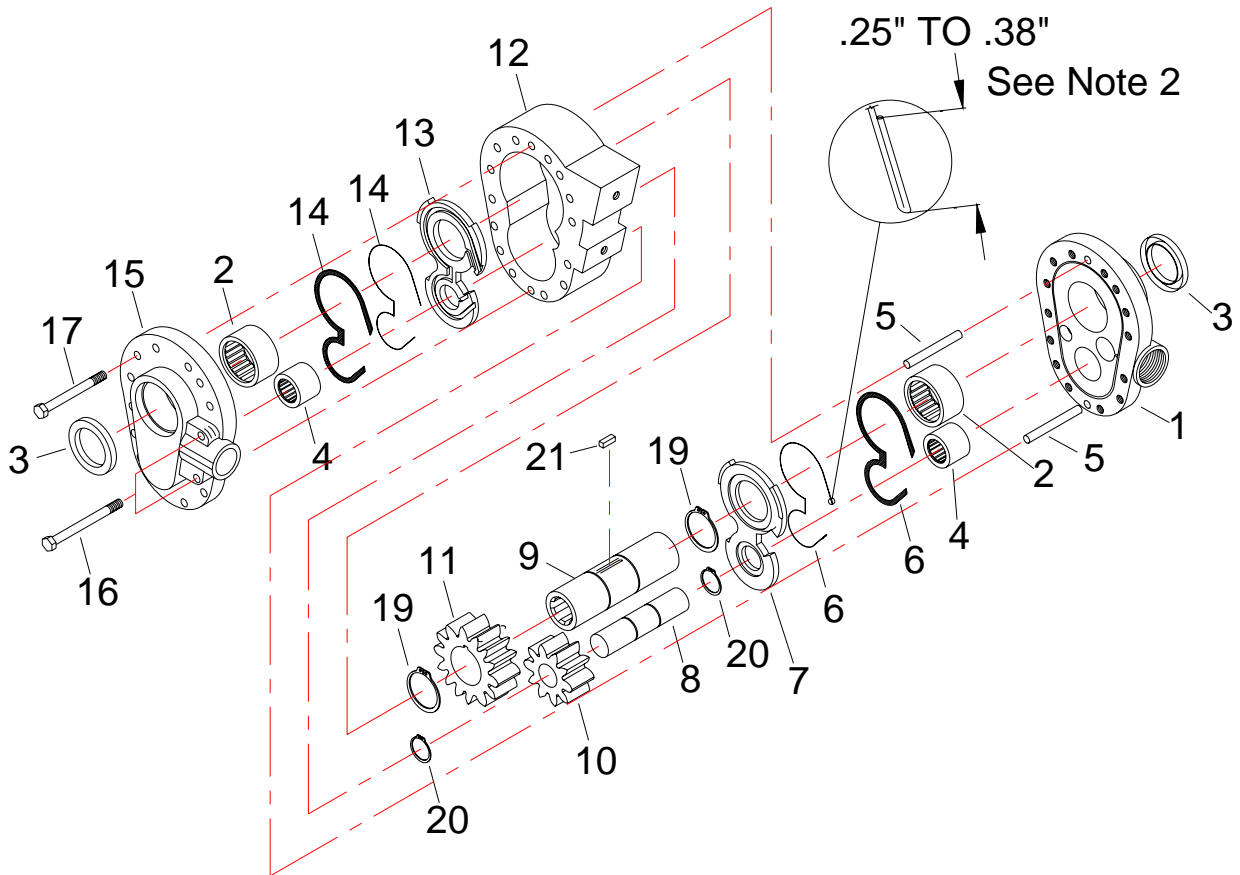
NOTE: 1. Spool Seal Installation Procedure: Install one O-Ring and Backup Washer in the Groove on Handle end of Rotary Spool, push Spool thru from Handle side just far enough to expose O-Ring Groove on the backside. Install the other O-Ring and Back-Up Washer and Push Spool back. Lubricate Seals before Installation.

Pump and Torque Arm



1	HK-100718	Hydraulic Pump (See Page 17)
2	HK-101049	Torque Arm
3	HW-204104G5Z	Bolt 3/8-16Nc x 1, gr5
4	HW-325204Z	Washer, Flat 3/8
5	HW-335204Z	Washer, Lock, 3/8
6	HW-300204ZG5	Nut, 3/8-16NC
7	HW-204106G5Z	Bolt, 3/8-16NC x 1-1/4, gr5
8	HW-204116G5Z	Bolt, 3/8-16NC x 2-1/2, gr5
9	HK-101261	Chain, (18 Links)

Hydraulic Pump # HK-100718



Note: Continued On Page 18 with Legend

Hydraulic Pump # HK-100718

Item	Part #	Description
1	HK101J	Back Plate
2	HK101H	Drive Shaft Bearing
3	151	Shaft Seal
4	HK101G	Idler Shaft Bearing
5	HK101N	Dowel Pin
6		Seal (Not Sold Separately)
7	HK101E	Wear Plate, Back
8	HK101K	Idler Shaft
9	HK101B	Drive Shaft
10	HK101C	Idler Gear
11	HK101D	Drive Gear
12	HK101A	Body (Special Order Only)
13	HK101F	Wear Plate, Front
14		Seal (Not Sold Separately)
15	HK101I	Front Plate
16	HK101L	Cap Screw 3/8-16NC
17	HK101M	Cap Screw 3/8-16NC
18	PMCK-PTO-1A	Seal Kit (Items 3, 6, & 14 are included)
19	HK101S	Snap Ring, Drive
20	HK101R	Snap Ring, Idler
21	HK101T	Key (1/4 x 1/4 x 3/4)

NOTES:

1. Torque Bolts to 30-35 ft-lbs.
2. Seal Stock is to be assembled between Wear Plate and Protector and then Trimmed so that from .25" to .38" extends from Wear plate on each end. The excess is then tucked back into Wear Plate Slot on the outside until it's flush with the Wear Plate edge.
3. During break-in, Gears will rub on inlet side of Body and "Mill" a slight Track-In Groove. The Track-In area should appear smooth and without distinct score lines.

DECAL



PART # HK-100986, WARNING DECAL



PART # HK-100916, DANGER DECAL



PART # HK-100899, CAUTION DECAL

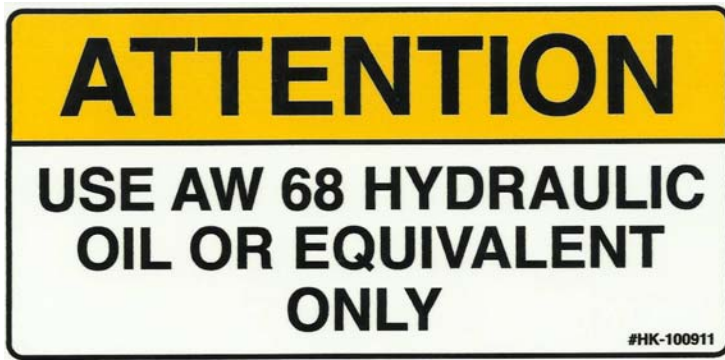


PART # WB-100214 PATENT DECAL

DECAL



PART # HK-100910, ATTENTION DECAL



PART # HK-100911, ATTENTION DECAL



PART # HK-100912, WARNING DECAL

DECAL

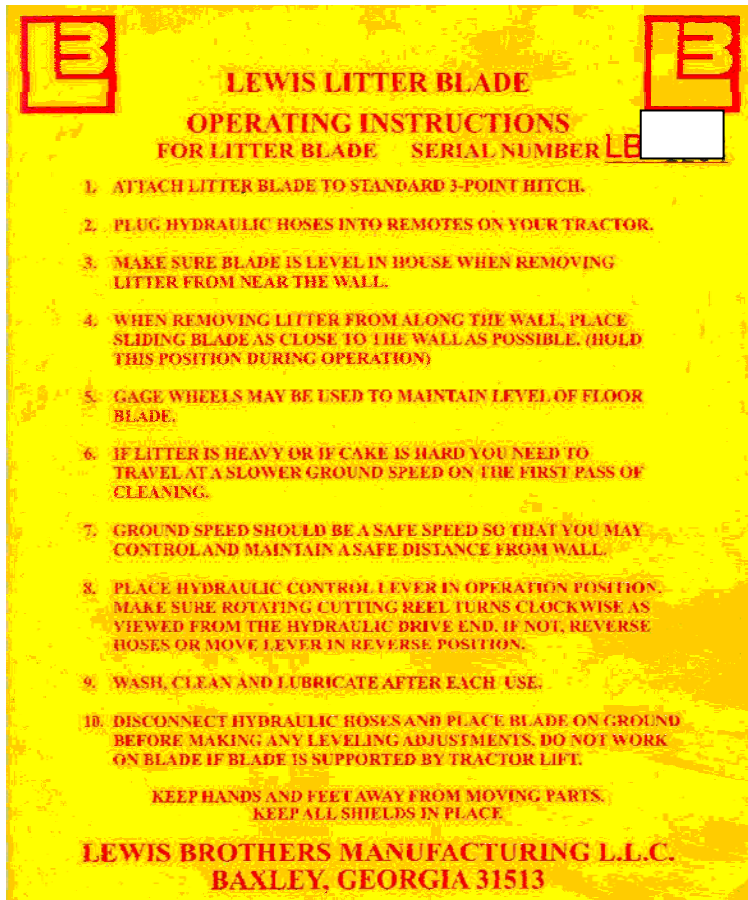


PART # HK-100919, DANGER DECAL



PART # HK-100922, LEWIS BROTHERS DECAL

DECAL



PART # WB-100187, OPERATING INSTRUCTIONS DECAL
71/4" H x 6" W



PART # HK-100918, WARNING DECAL,